

Locations

Anson County Locations

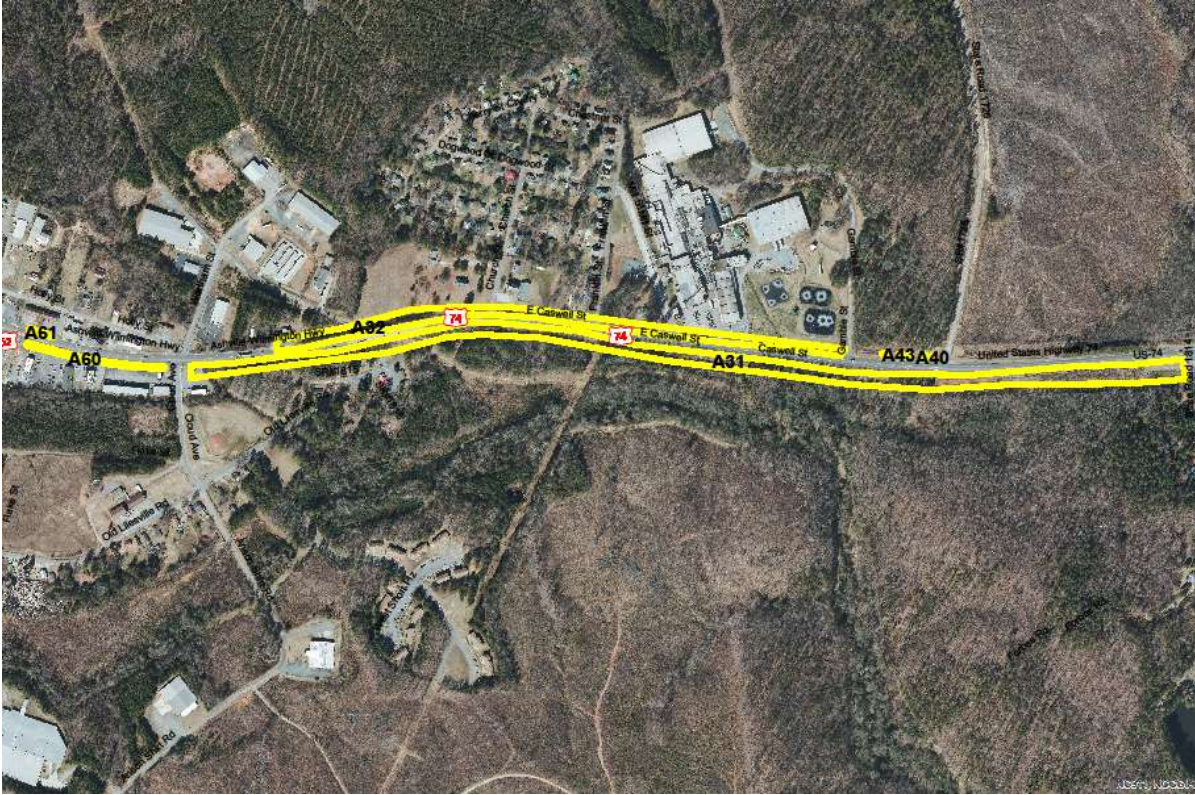
US 74 at the Richmond County line



Lilesville



East Wadesboro



West Wadesboro



Polkton and Polkton Camp



Peachland



Ansonville



Morvan Elementary and North Morvan



South Morvan



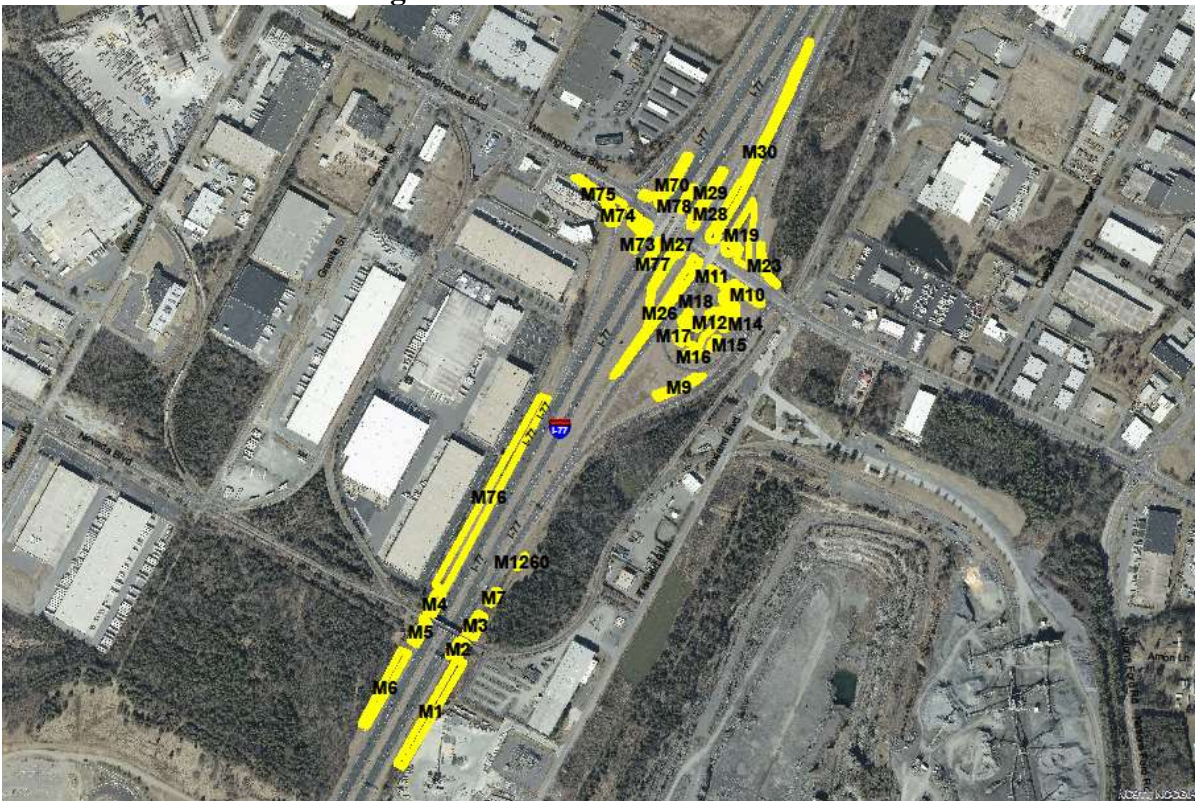
Cabarrus County Locations
NC 3 in Concord



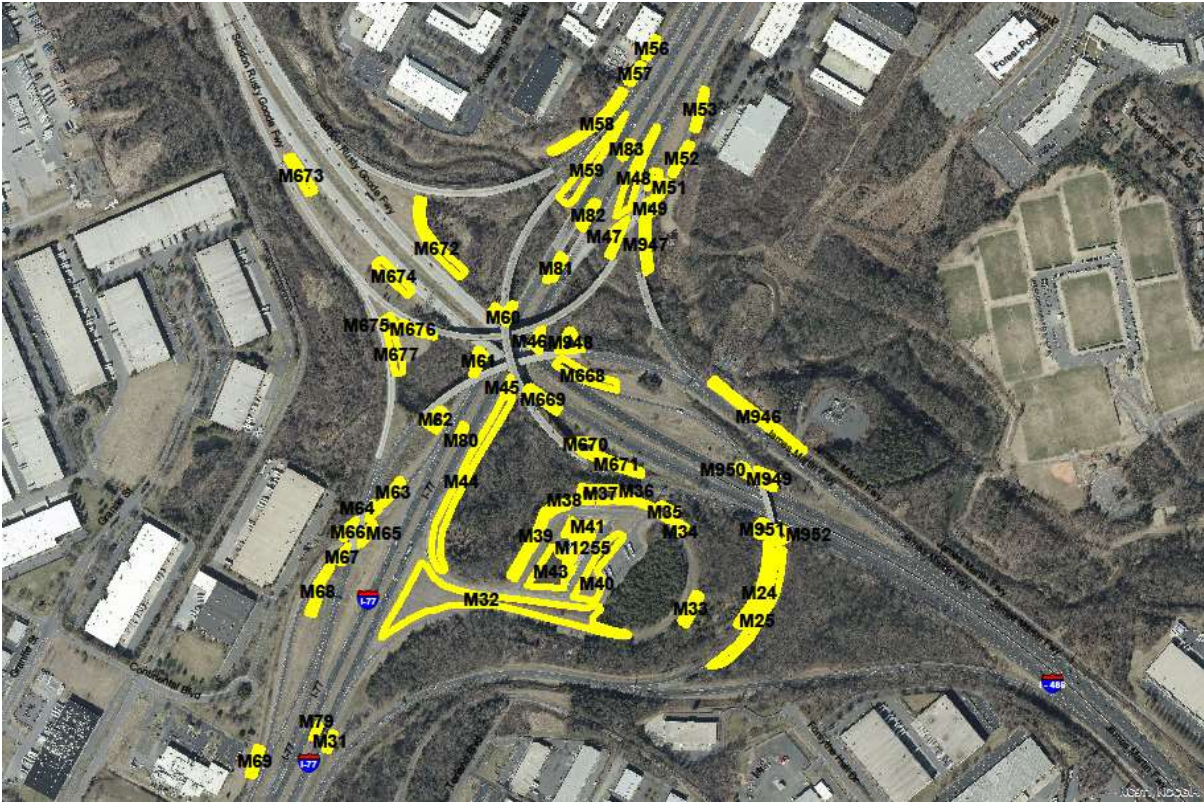
Kannapolis



Mecklenburg County Locations I-77 from SC Line to Westinghouse



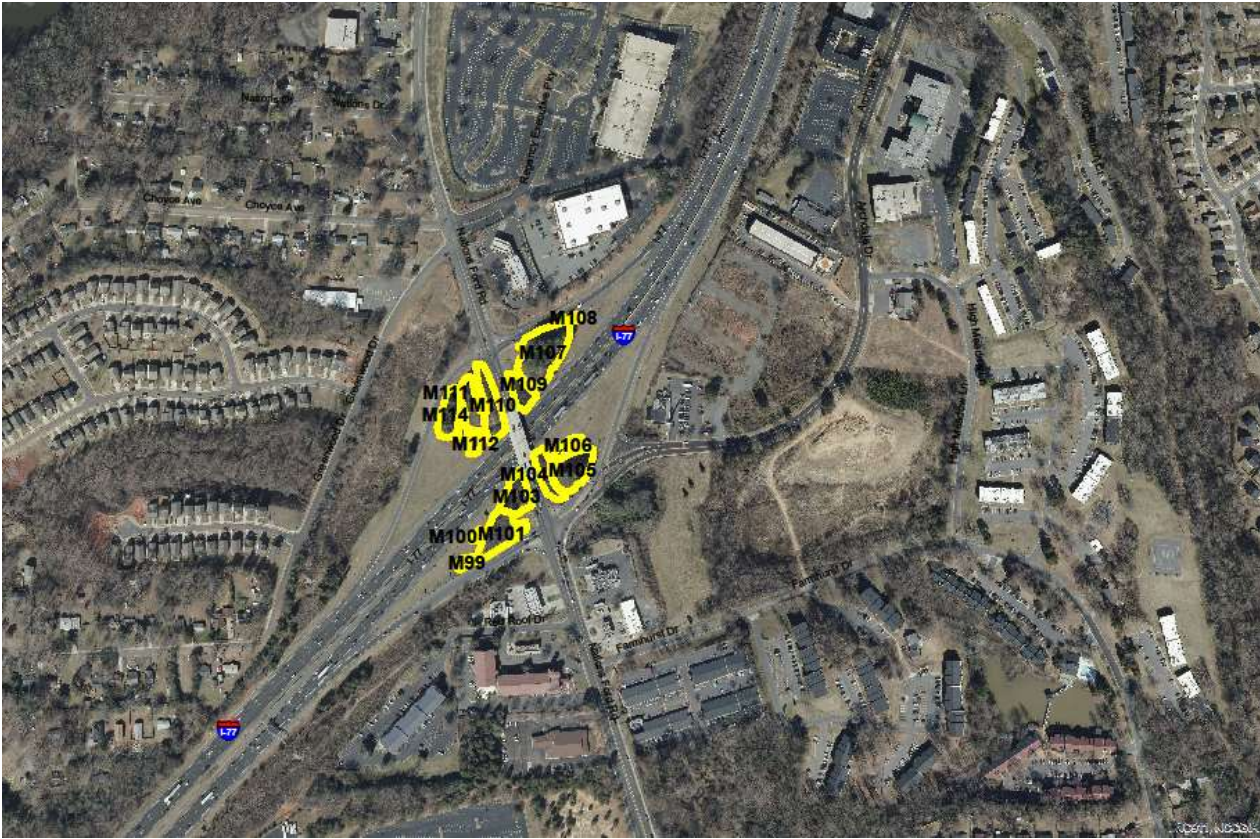
I-77 to I-485 in South Charlotte



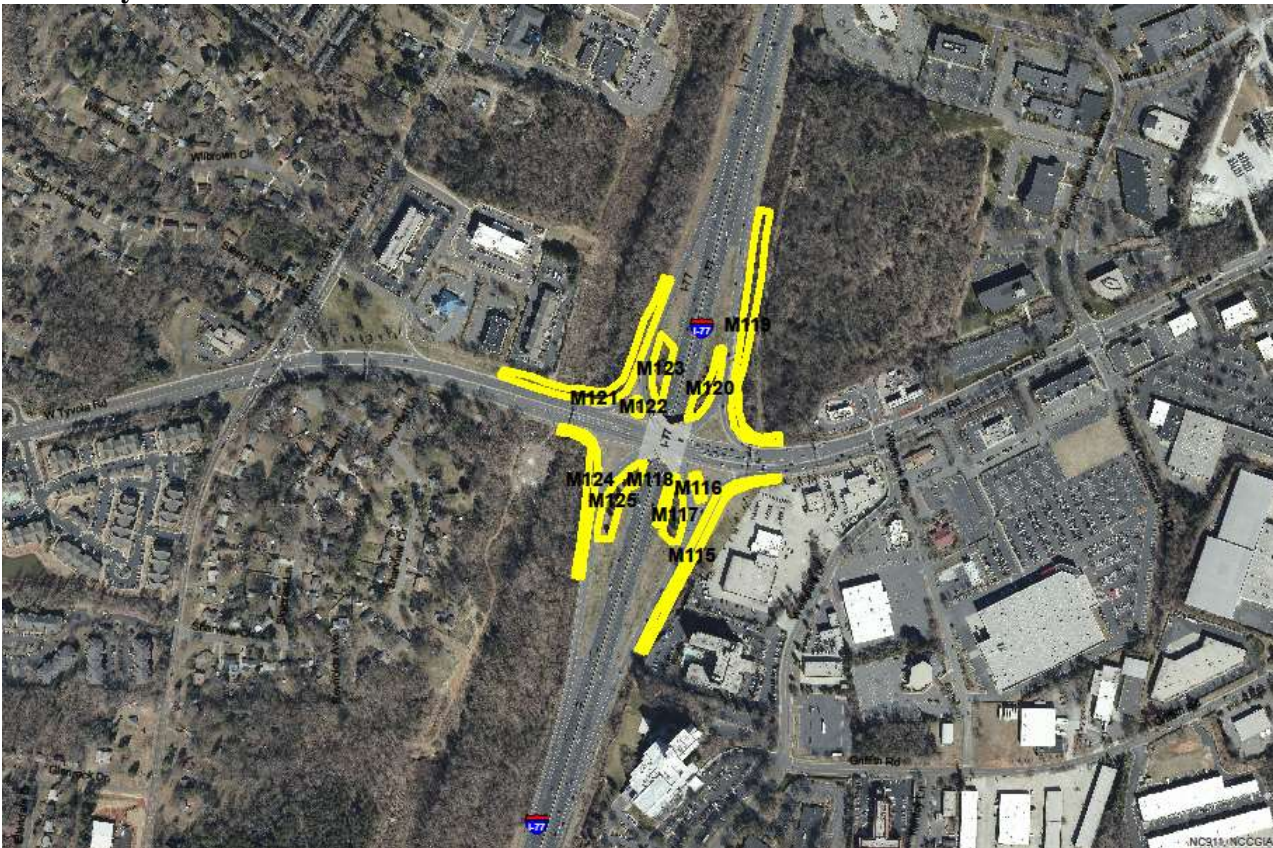
I-77 to Arrowood Rd.



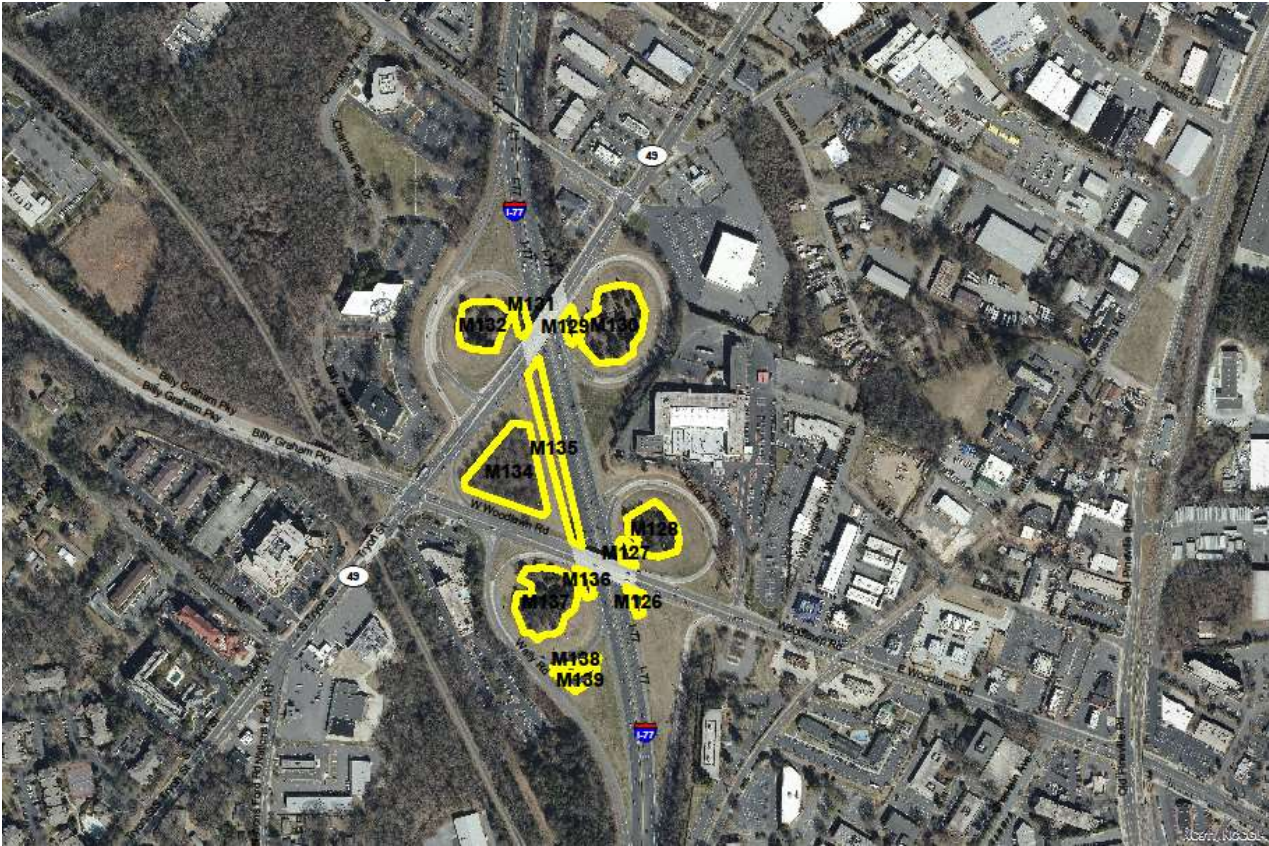
I-77 at Nations Ford Rd.



I-77 at Tyvola Rd.



I-77 at Woodlawn and S. Tryon St.



I-77 at Clanton Rd. – including wooded areas in quadrants



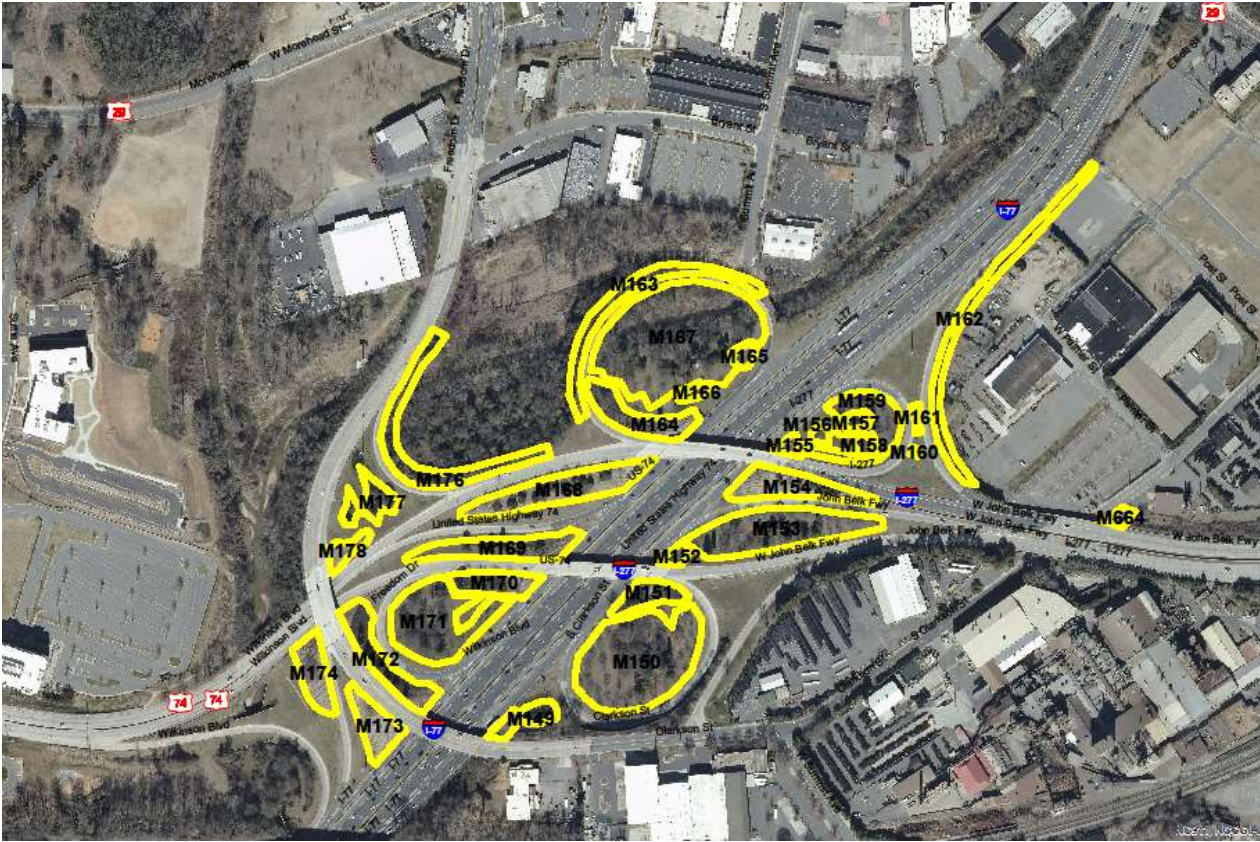
I-77 at Remount Rd. – including wooded areas in quadrants



I-77 at West Blvd.



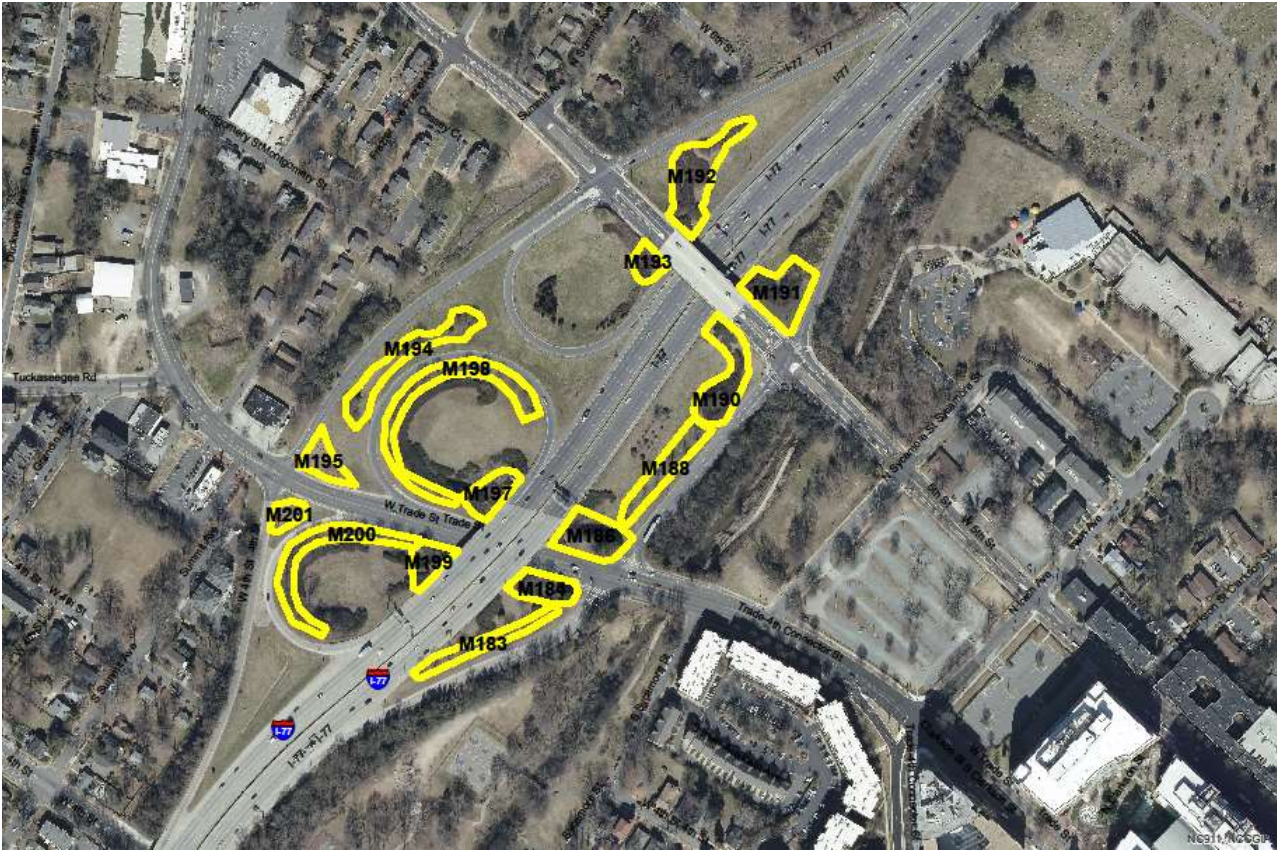
I-77 at I-277 & I-277 at Clarkson St.



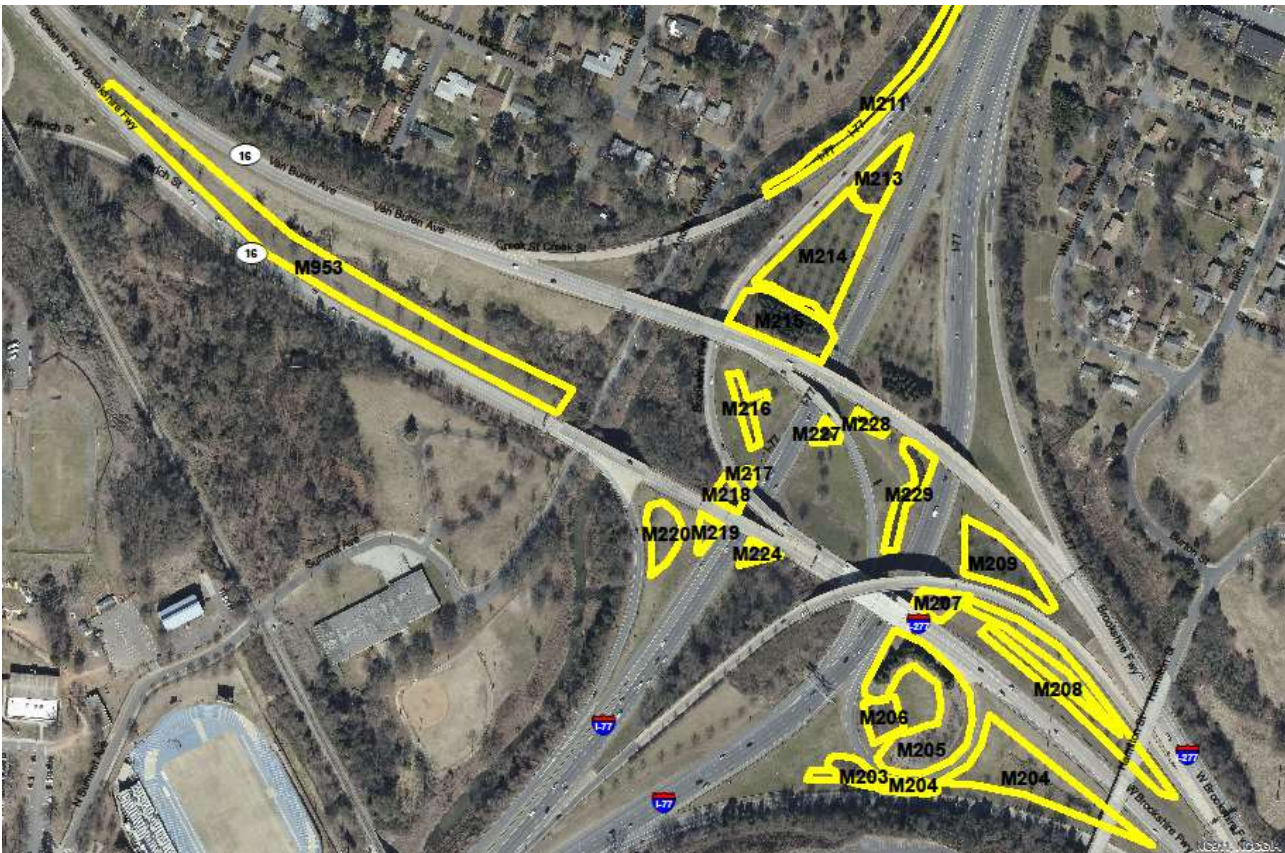
I-77 at Morehead St.



I-77 at Trade St. and 5th St.



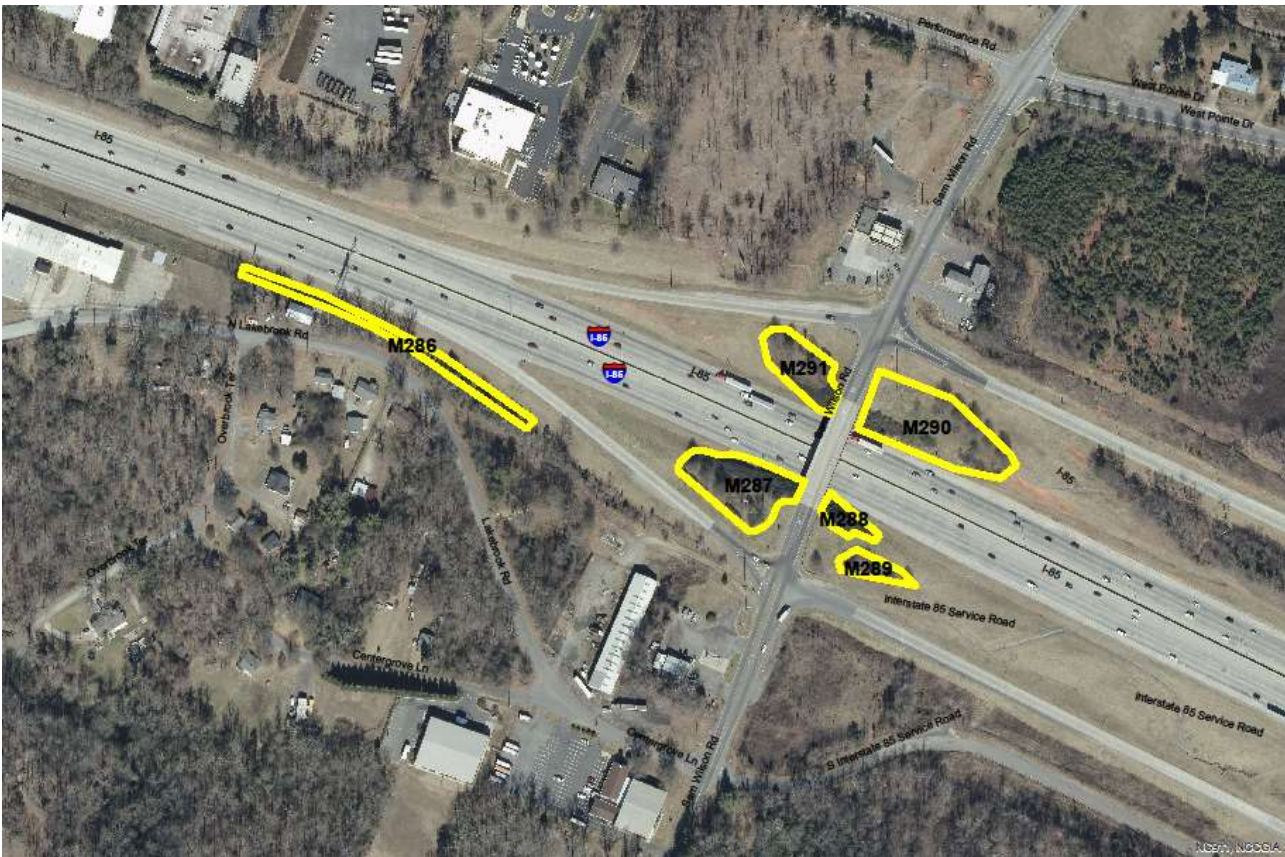
I-77 at Brookshire Blvd.



I-85 at the Weigh Station



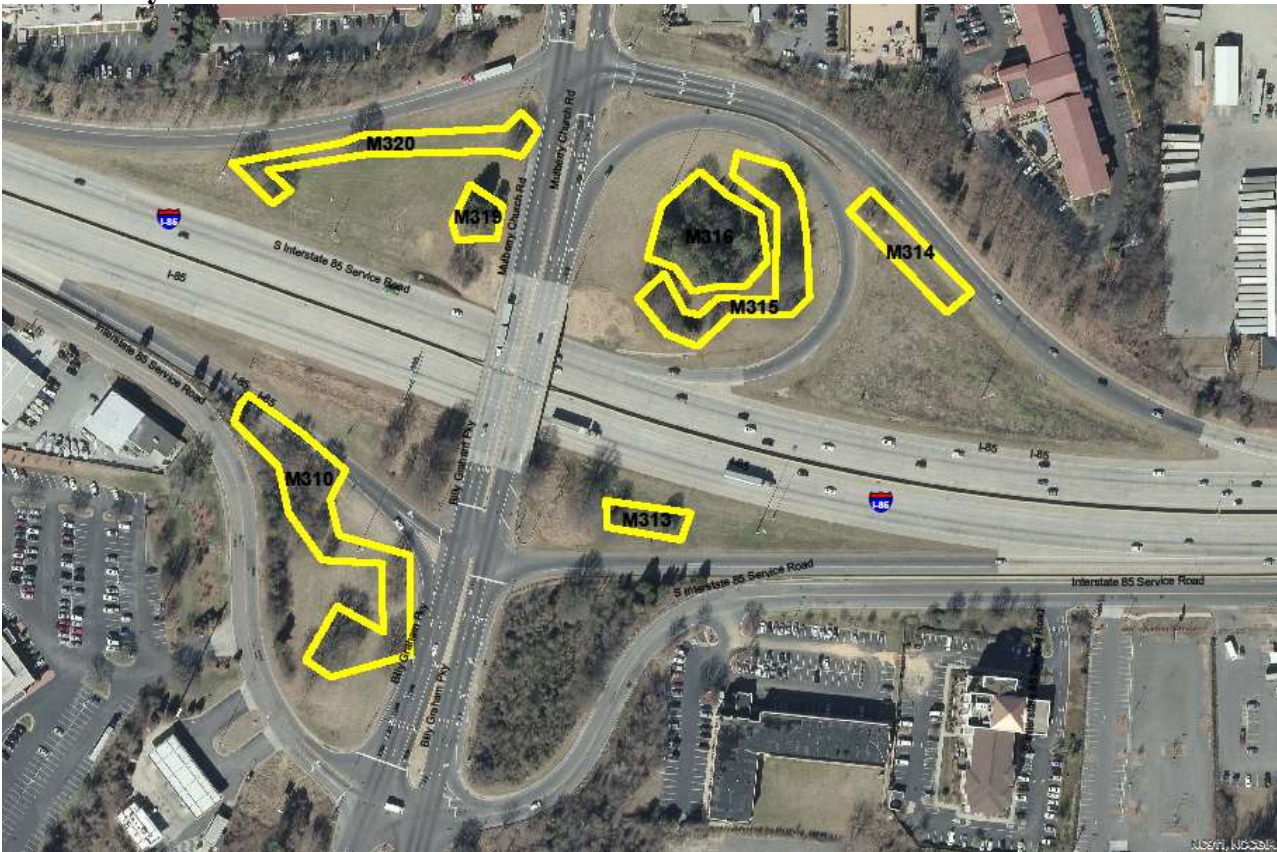
I-85 at Sam Wilson Rd.



I-85 at Little Rock Rd.



I-85 at Billy Graham



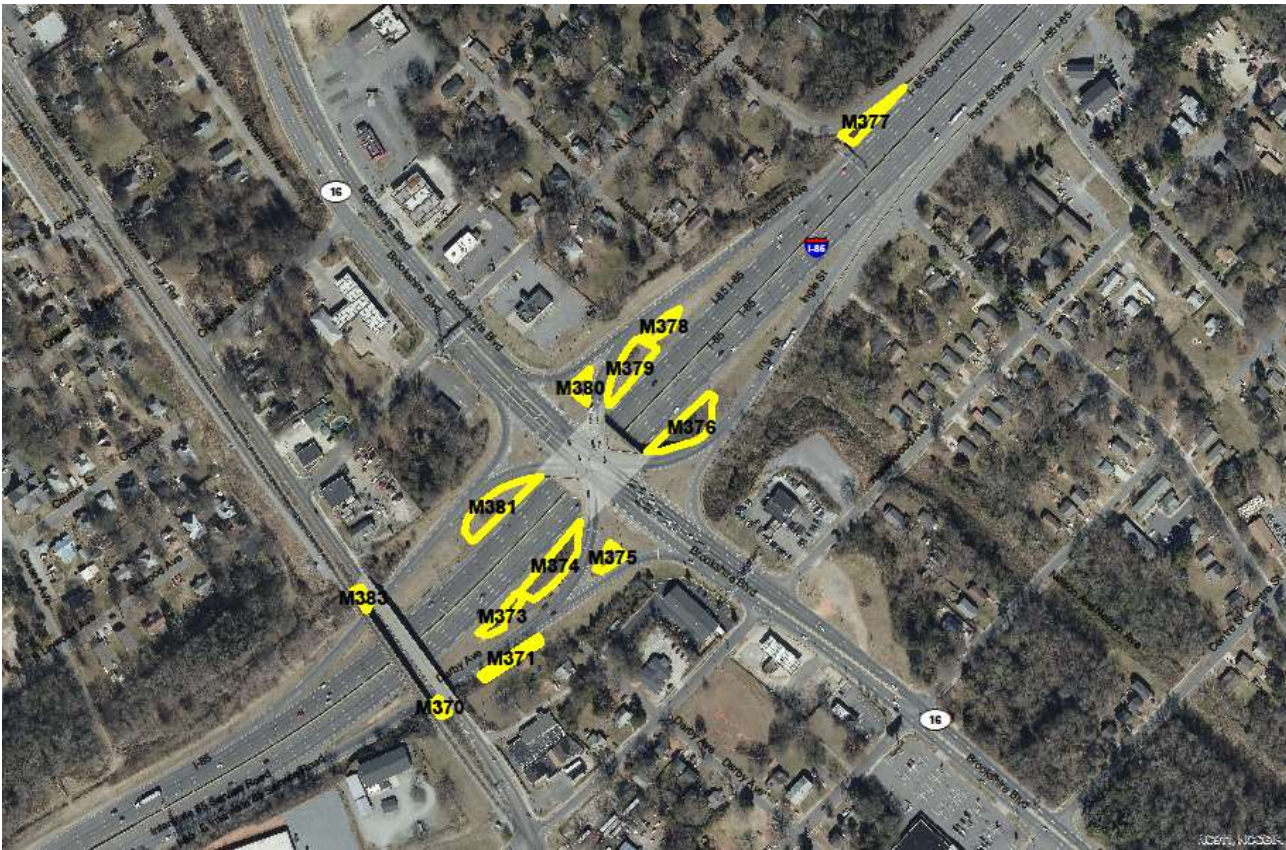
I-85 at Tuckaseegee Rd. and Freedom Dr.



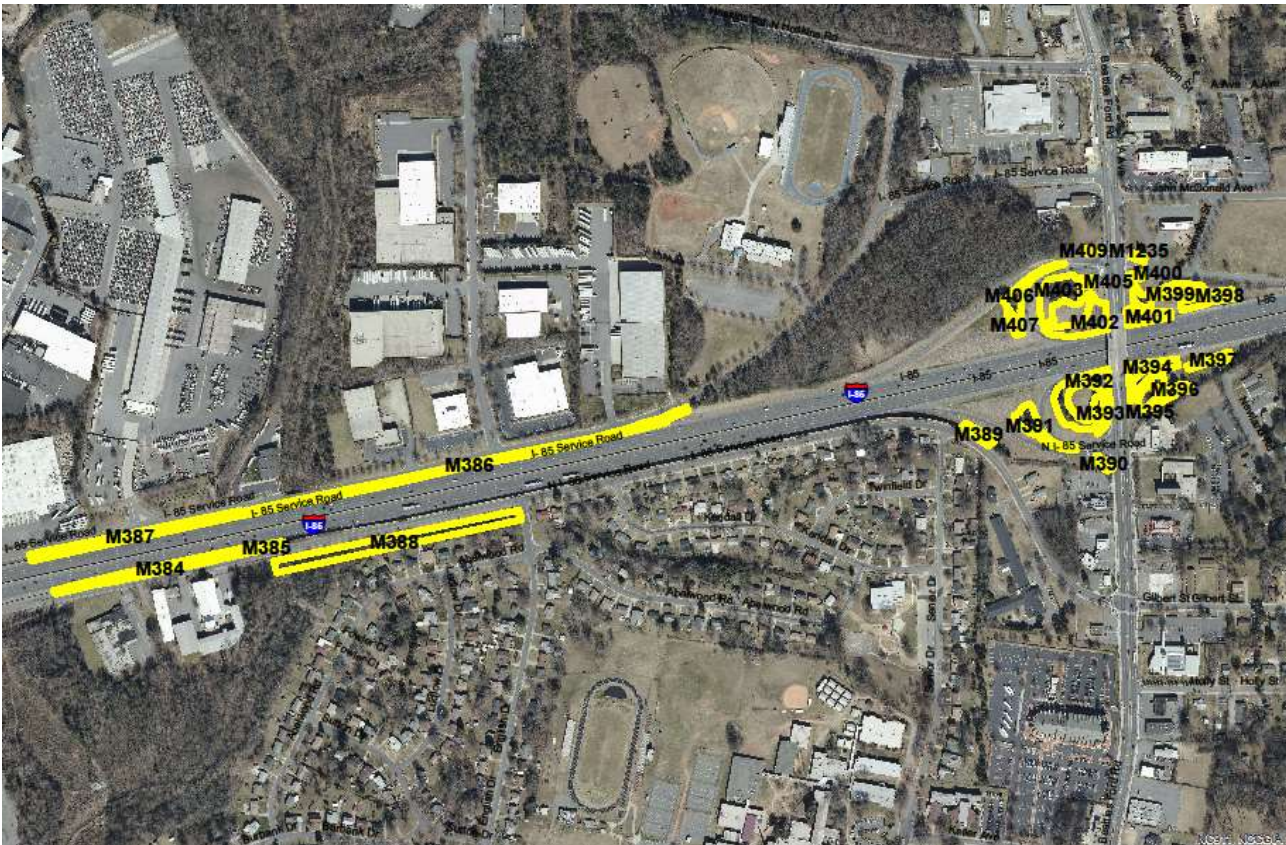
I-85 at Glenwood Ave.



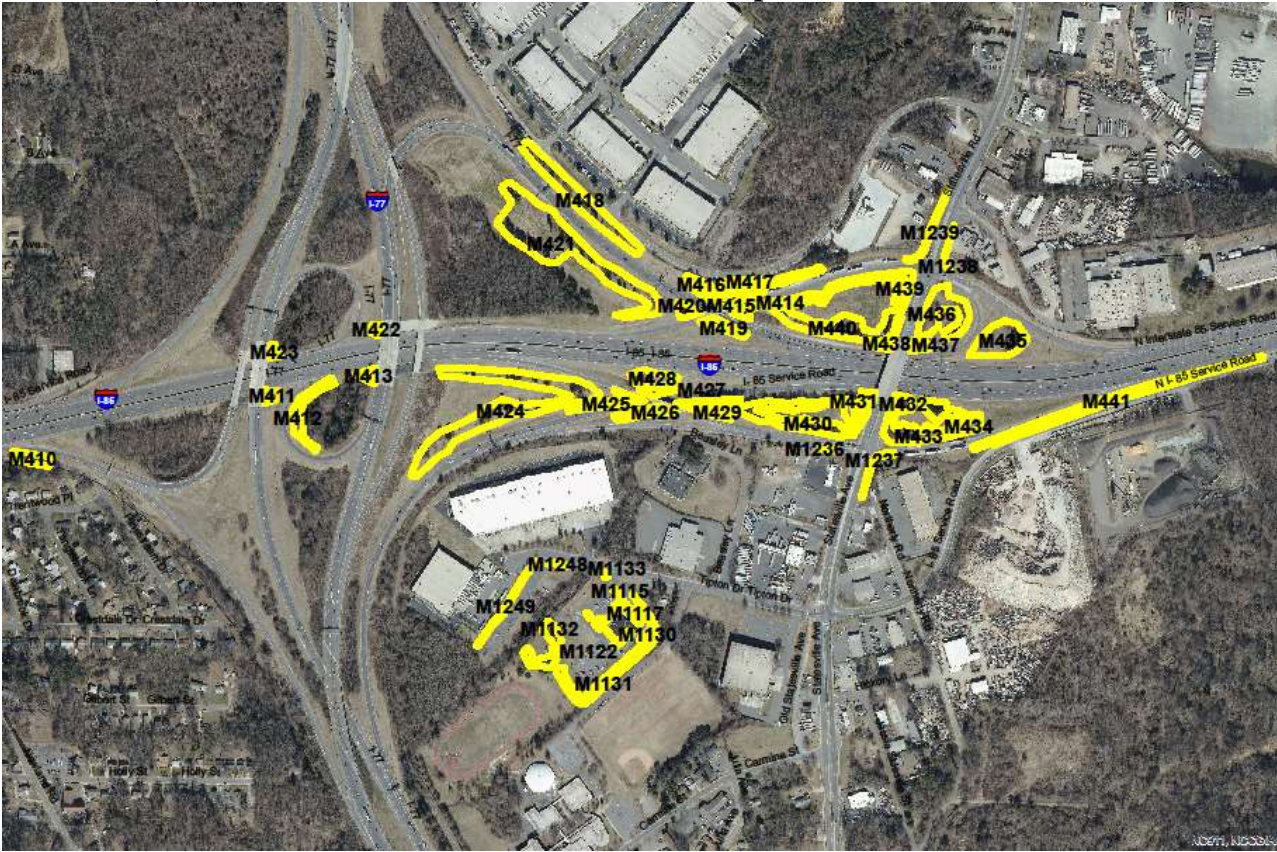
I-85 at Brookshire Blvd.



I-85 walls and Beatties Ford Rd.



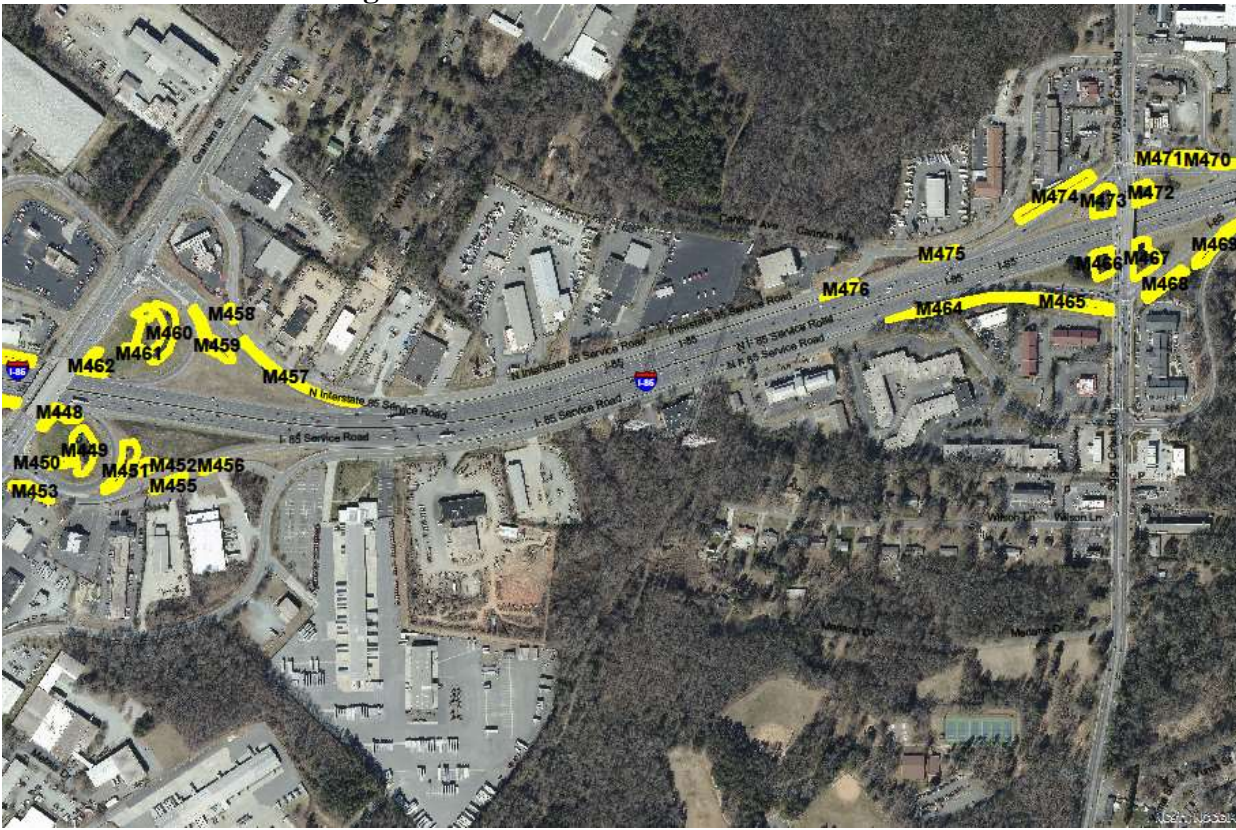
I-85 at I-77, Statesville Ave. and the IMAP Office on Tipton Dr.



I-85 Shoulders, Daylily beds from Statesville Ave. to Graham St.



I-85 at Graham St. and Sugar Creek Rd.



I-85, Daylilies north of Sugar Creek Rd.



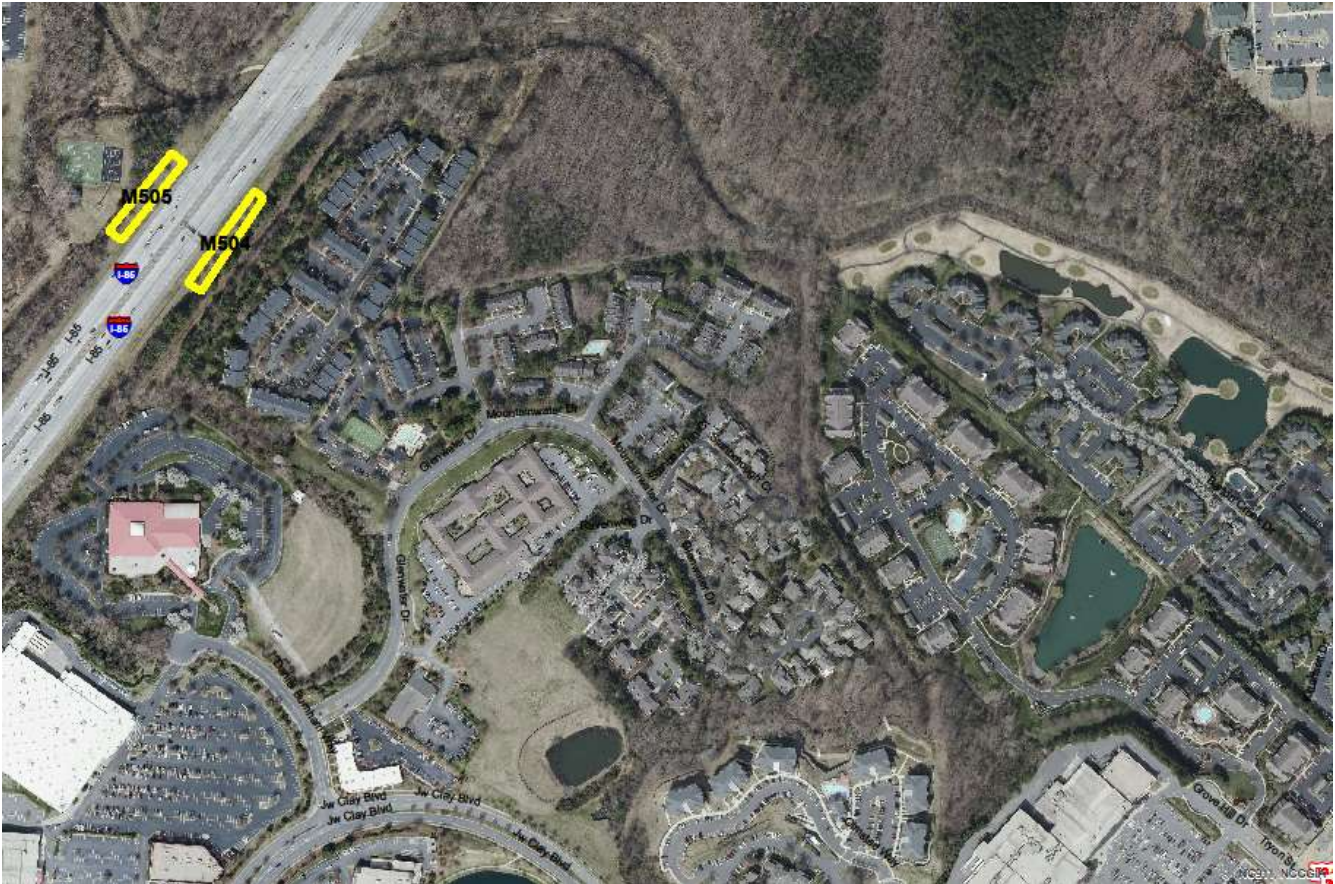
I-85 at City Blvd.



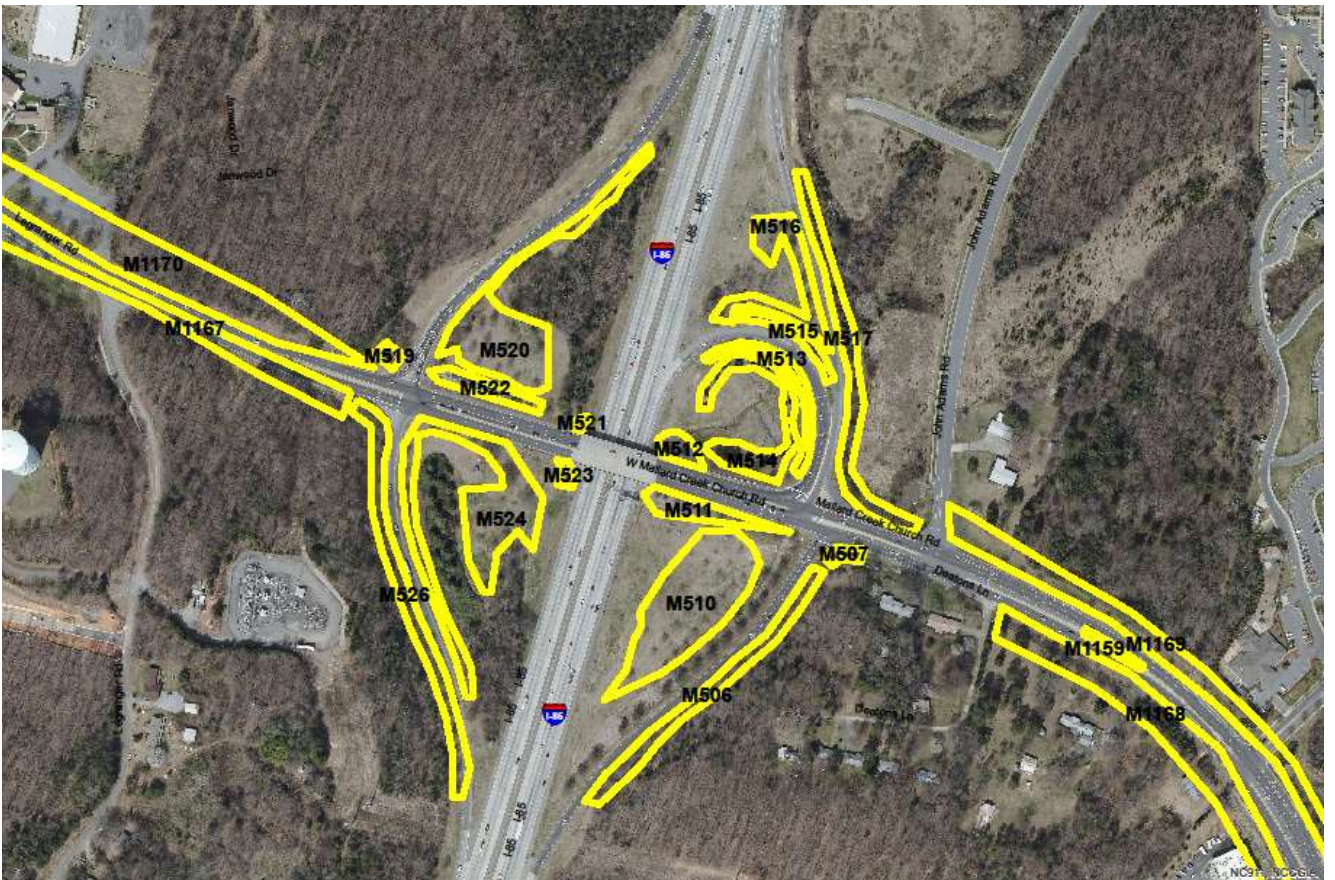
I-85 at Harris Blvd.



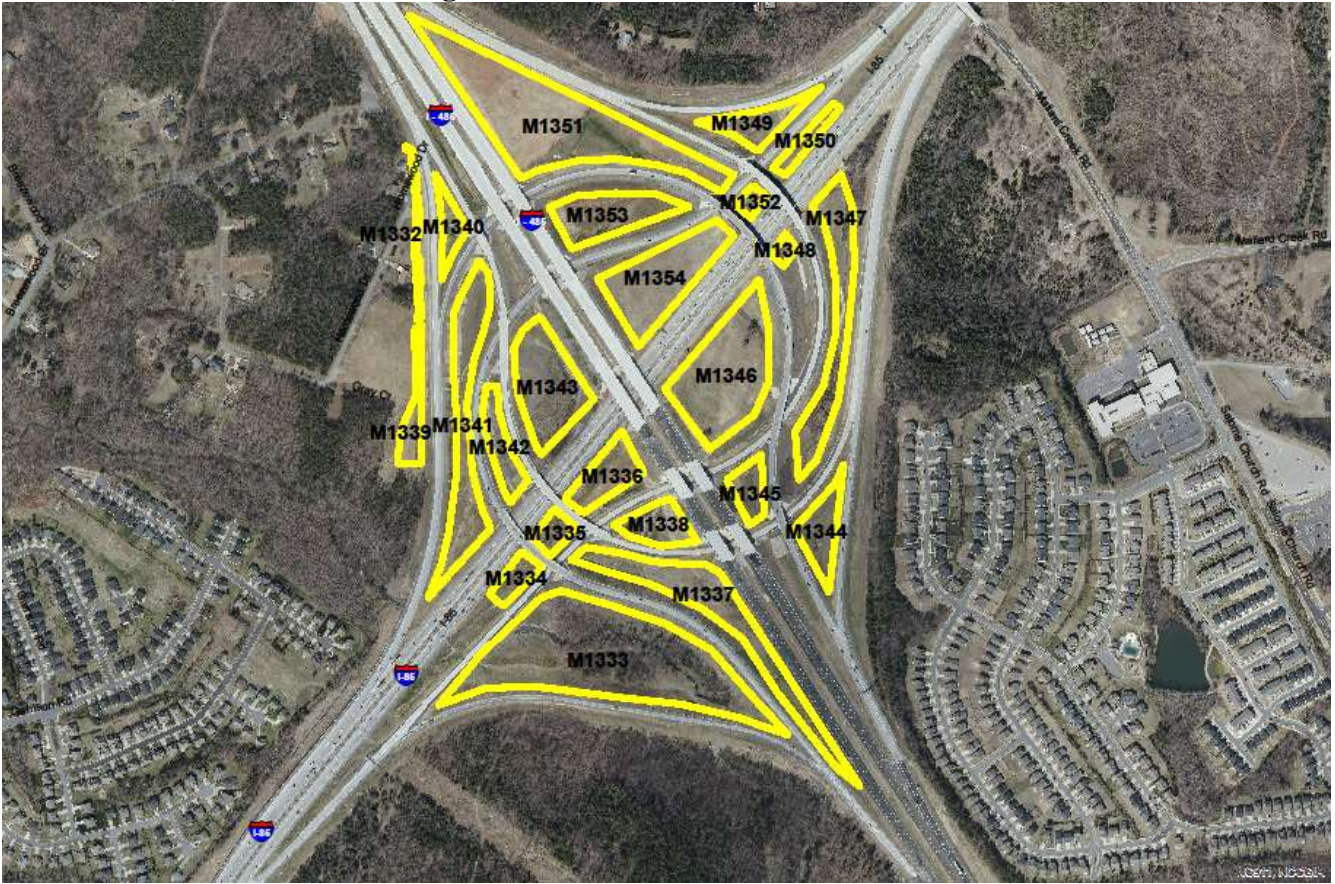
I-85 Trees between Harris Blvd. and Mallard Creek Church Rd.



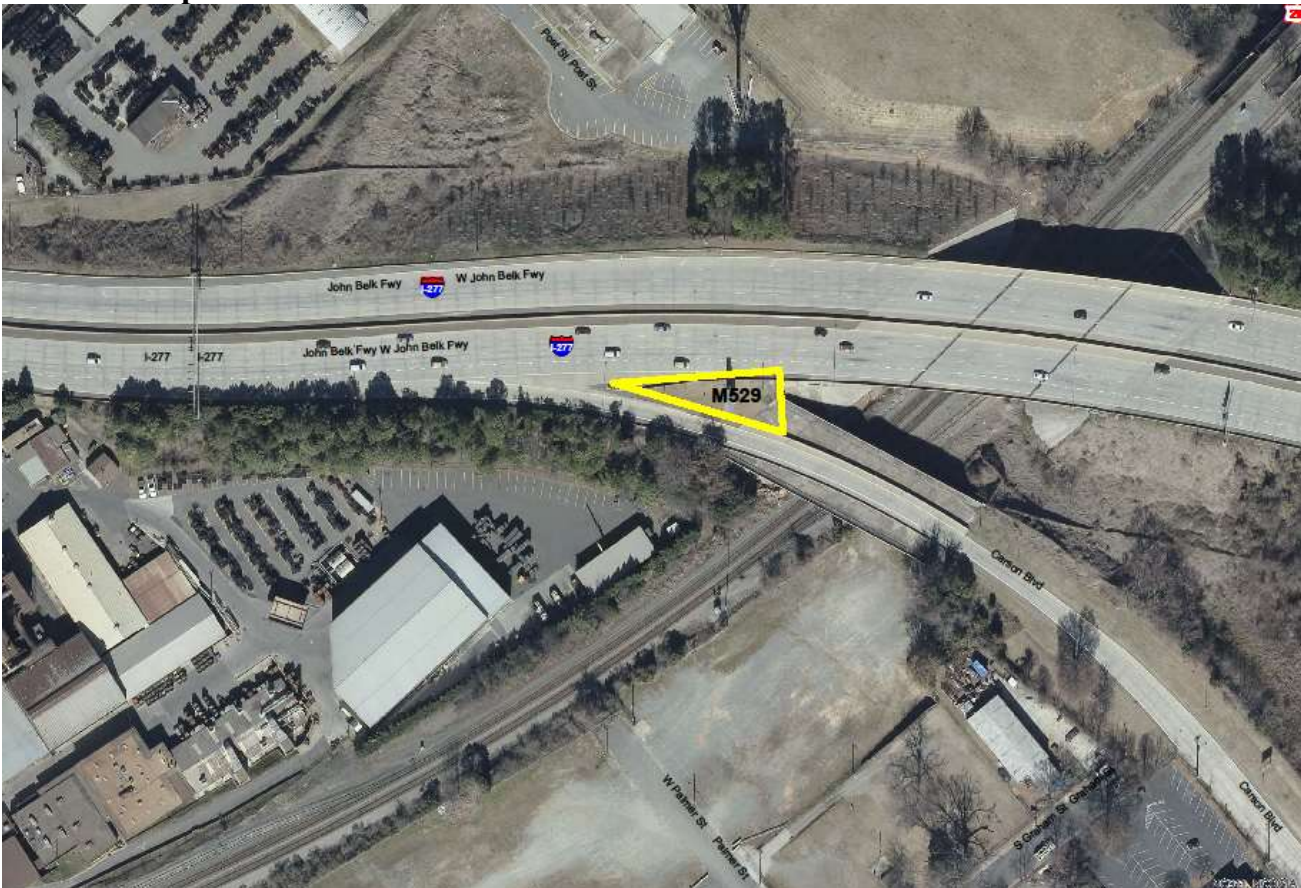
I-85 at Mallard Creek Church Rd.



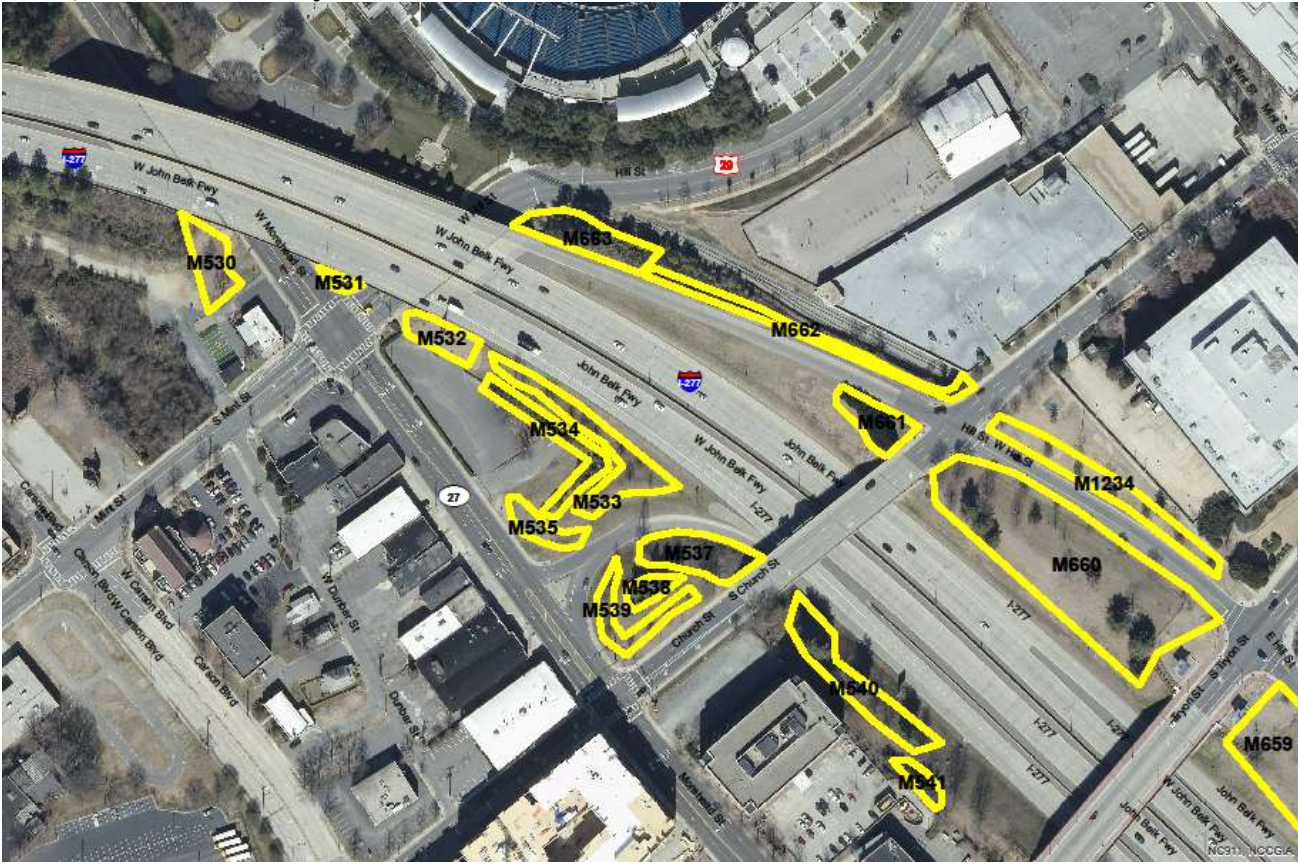
I-85 at I-485, Turbine Interchange north of Charlotte



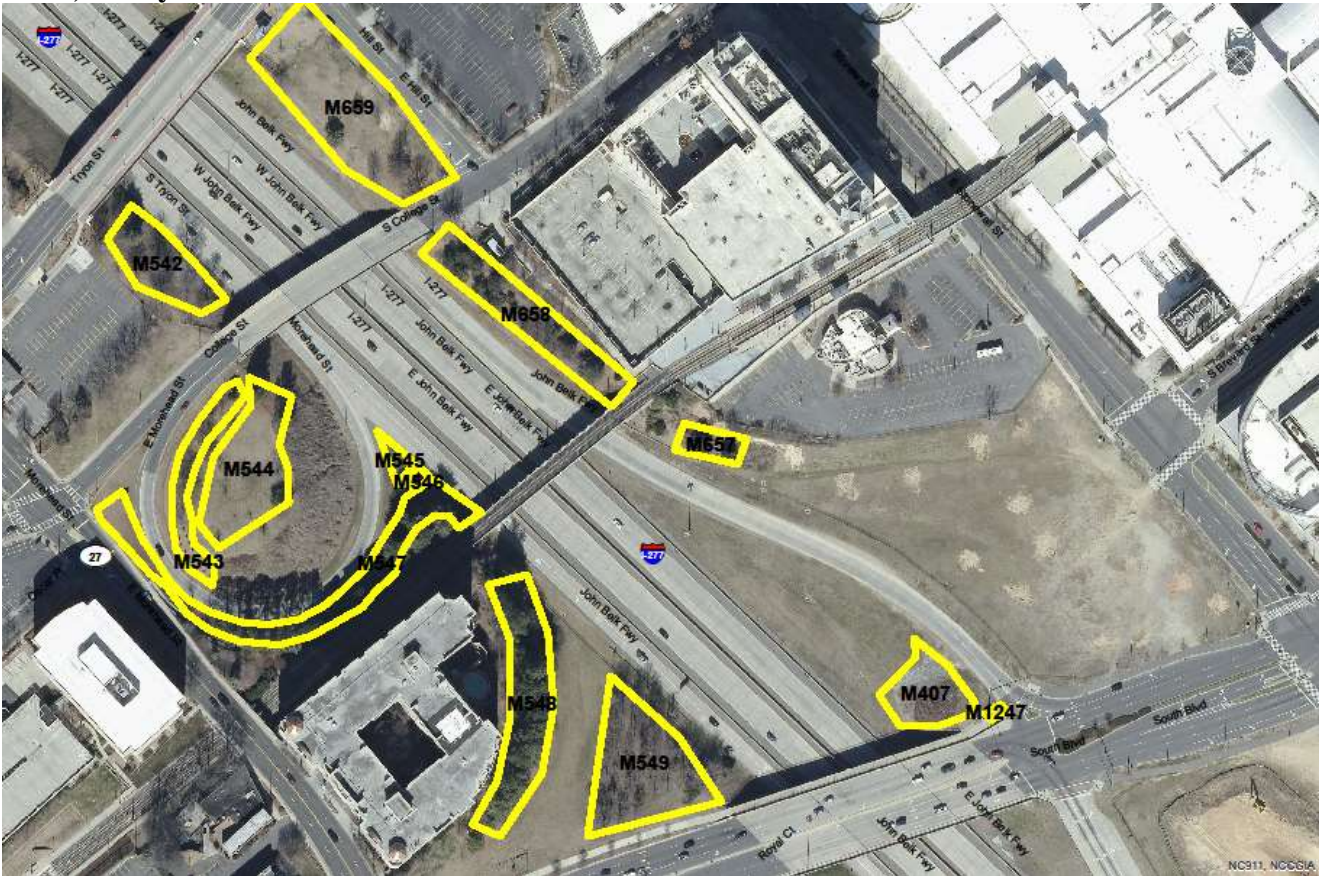
I-277 at Ramp to Carson Blvd.



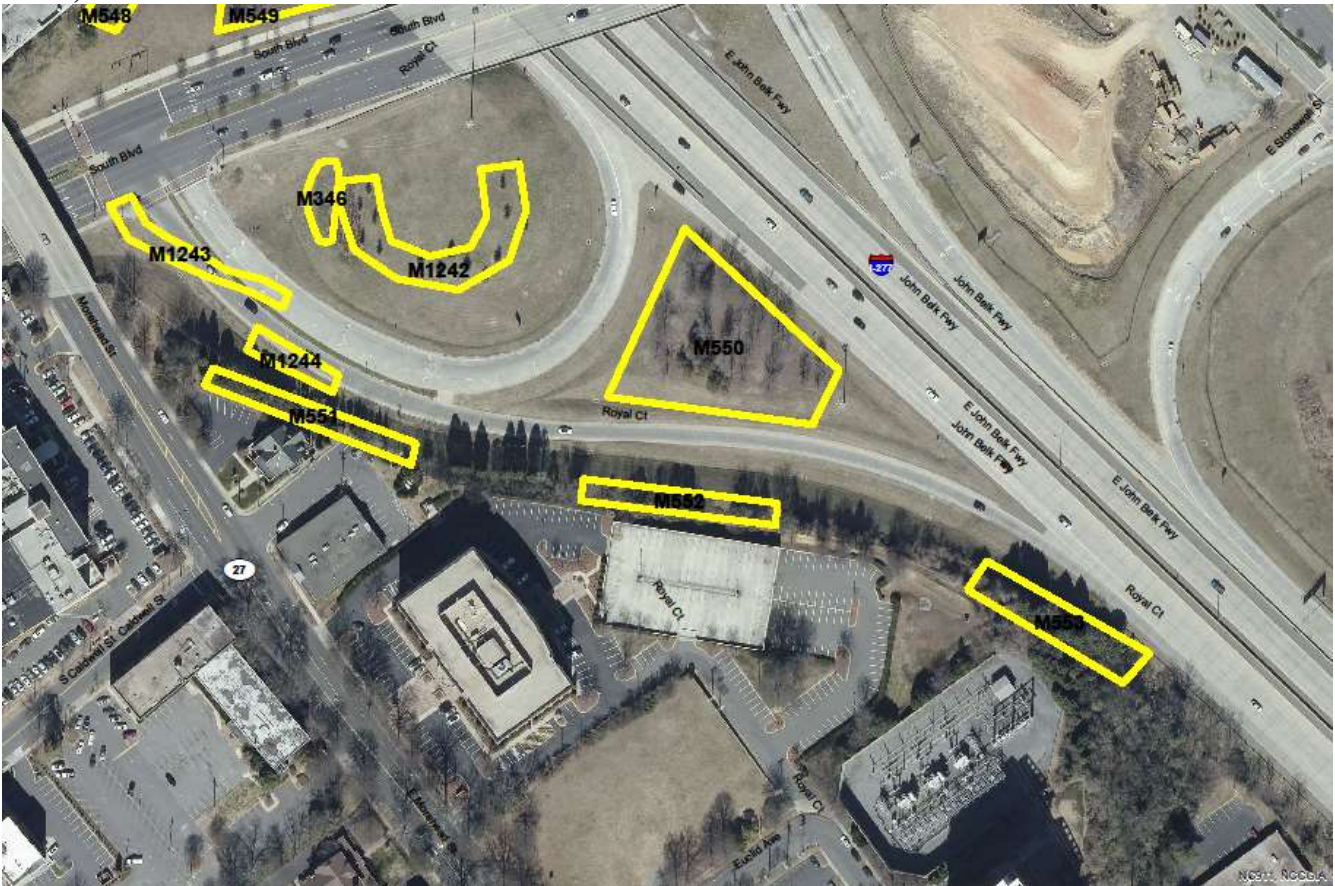
I-277, Mint St. to S. Tryon St.



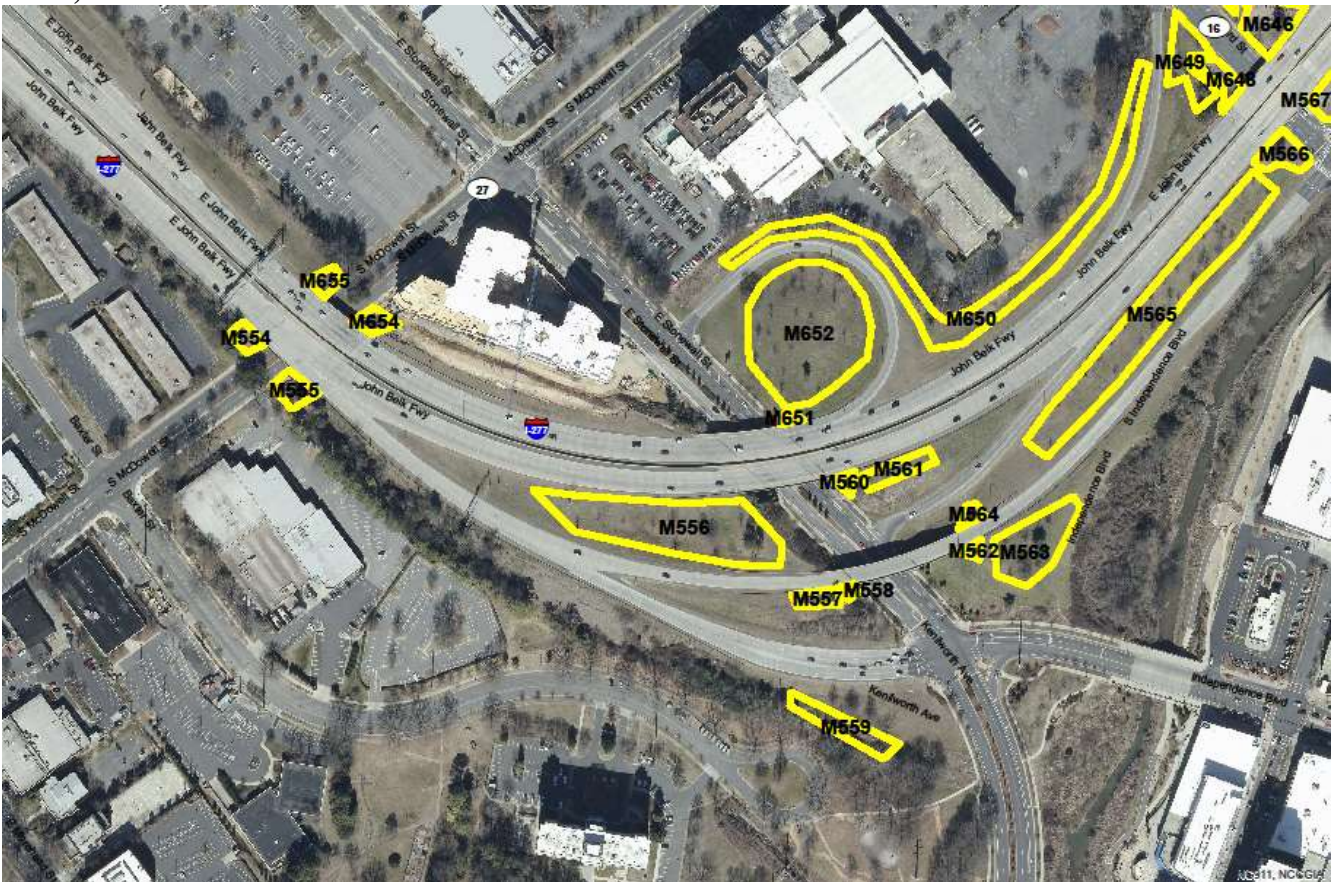
I-277, S. Tryon St. to South Blvd.



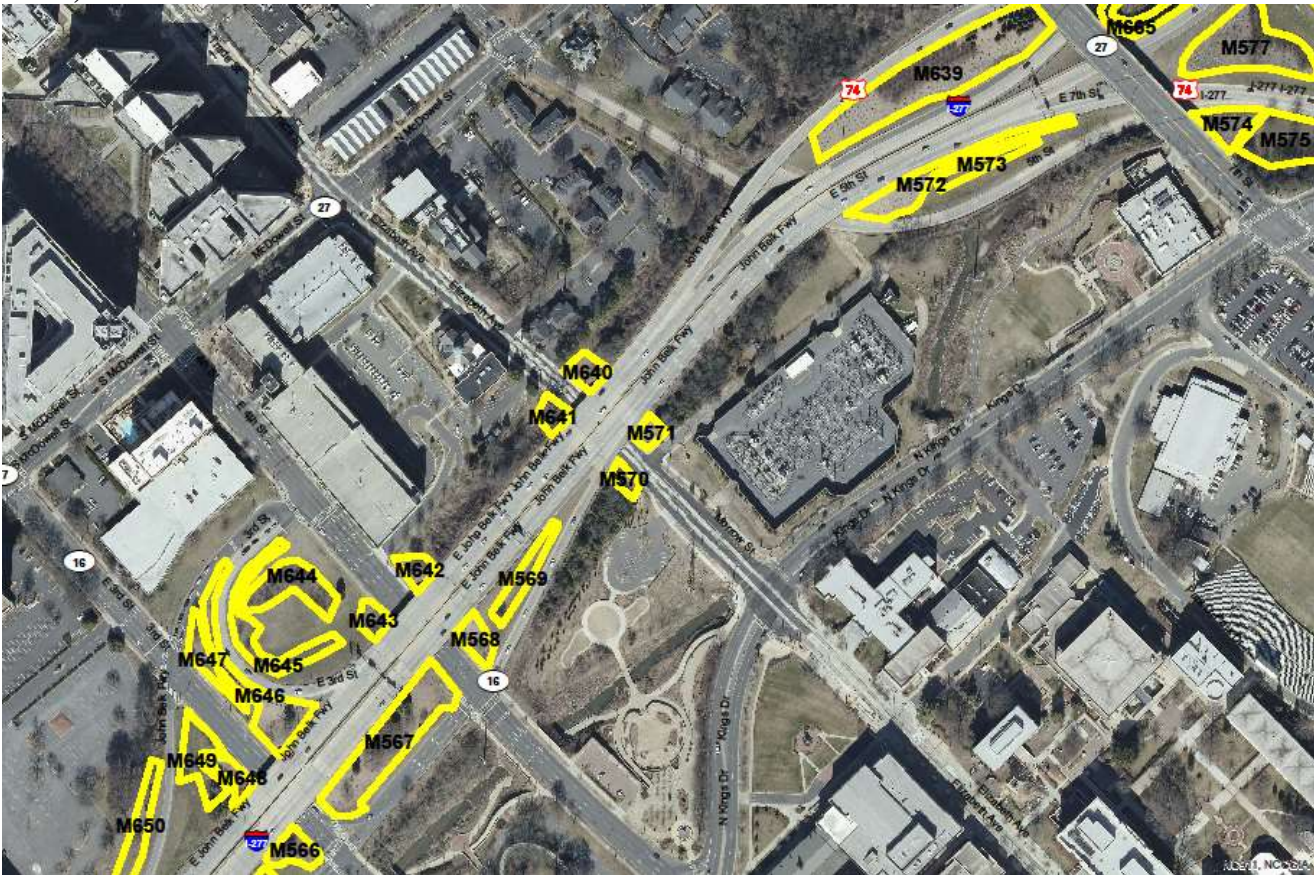
I-277, South Blvd. towards Kenilworth Ave.



I-277, McDowell St. to 3rd St.



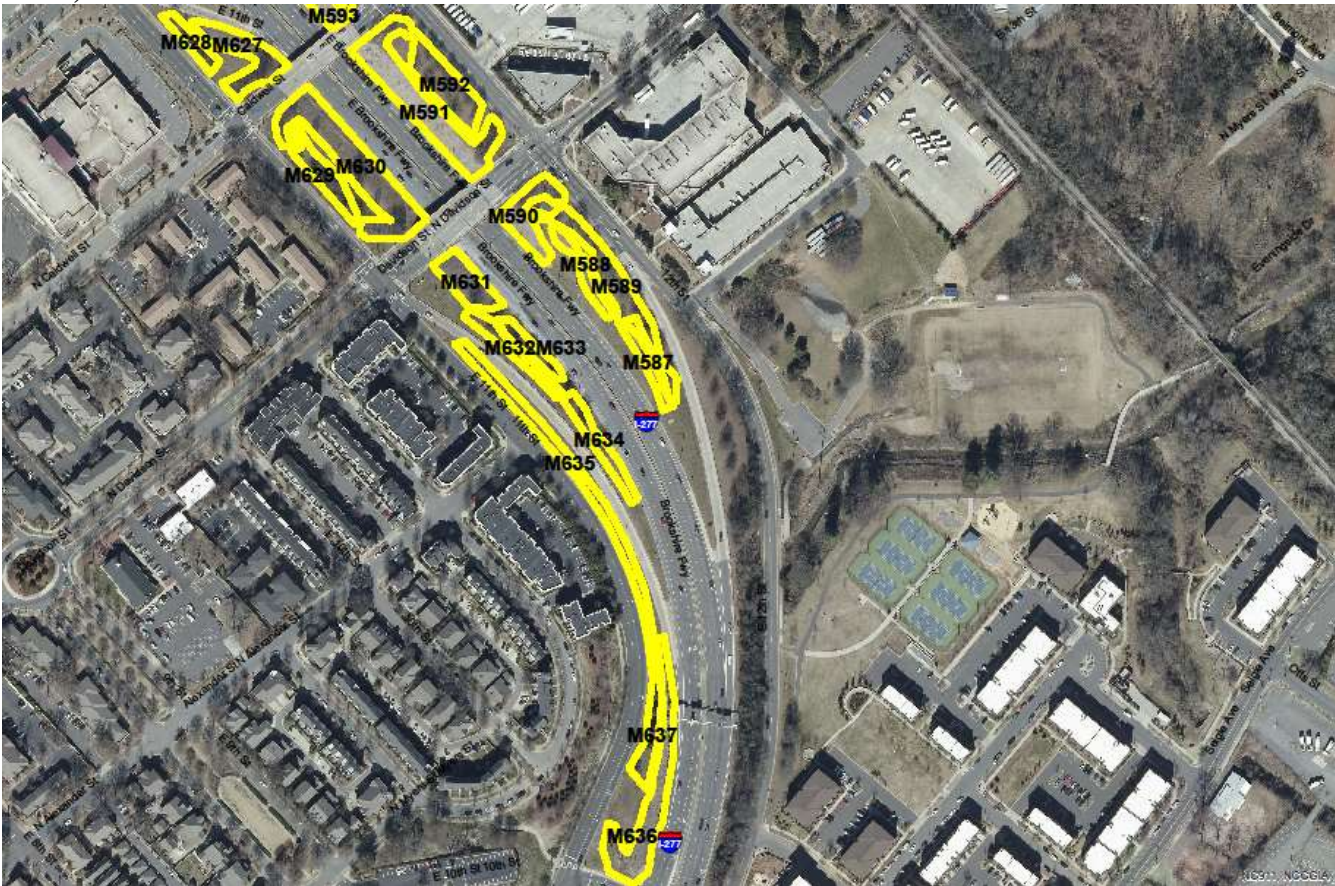
I-277, 3rd St. to 7th St.



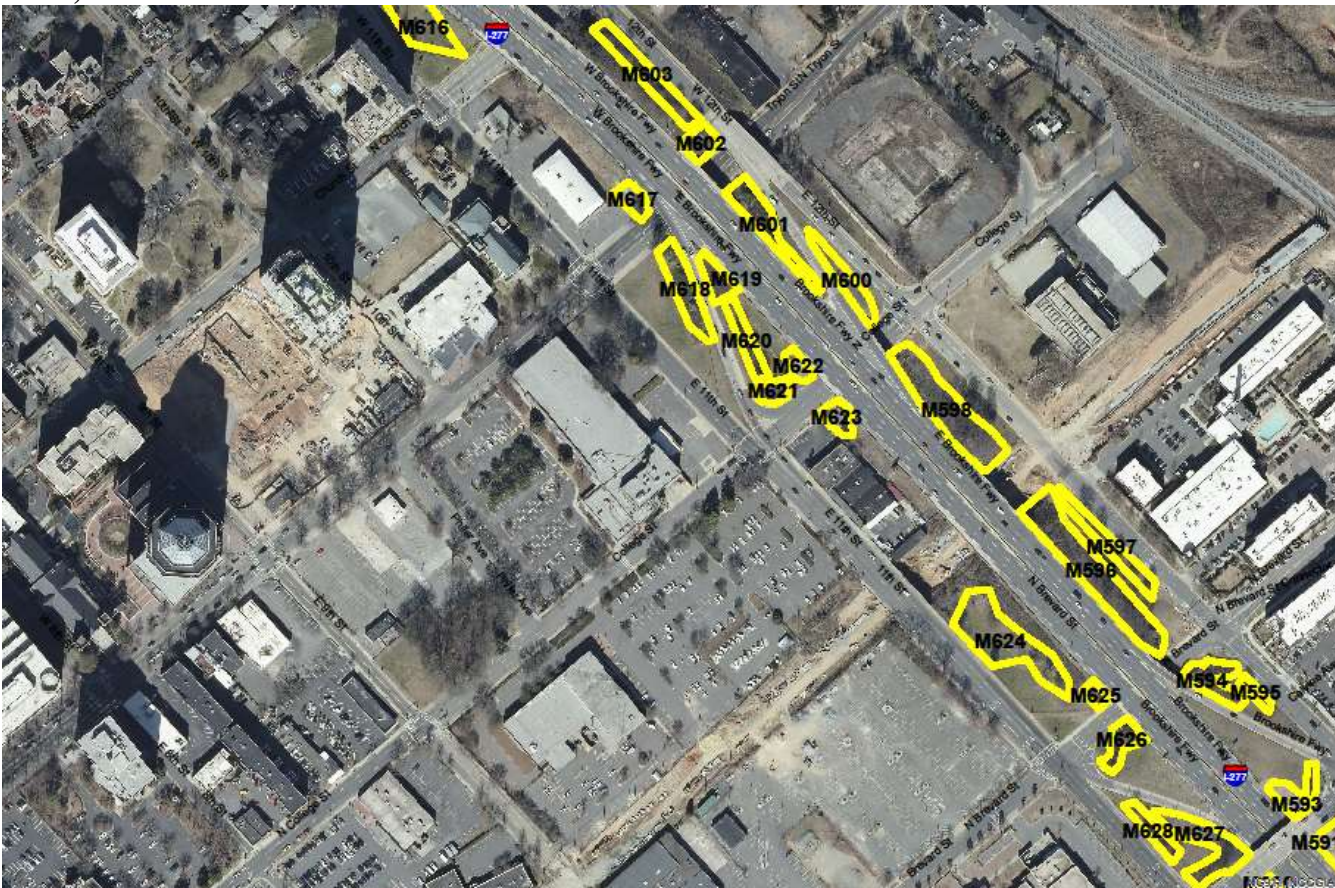
I-277 at US 74, Independence Blvd., 7th St. Central Ave., to 10th St.



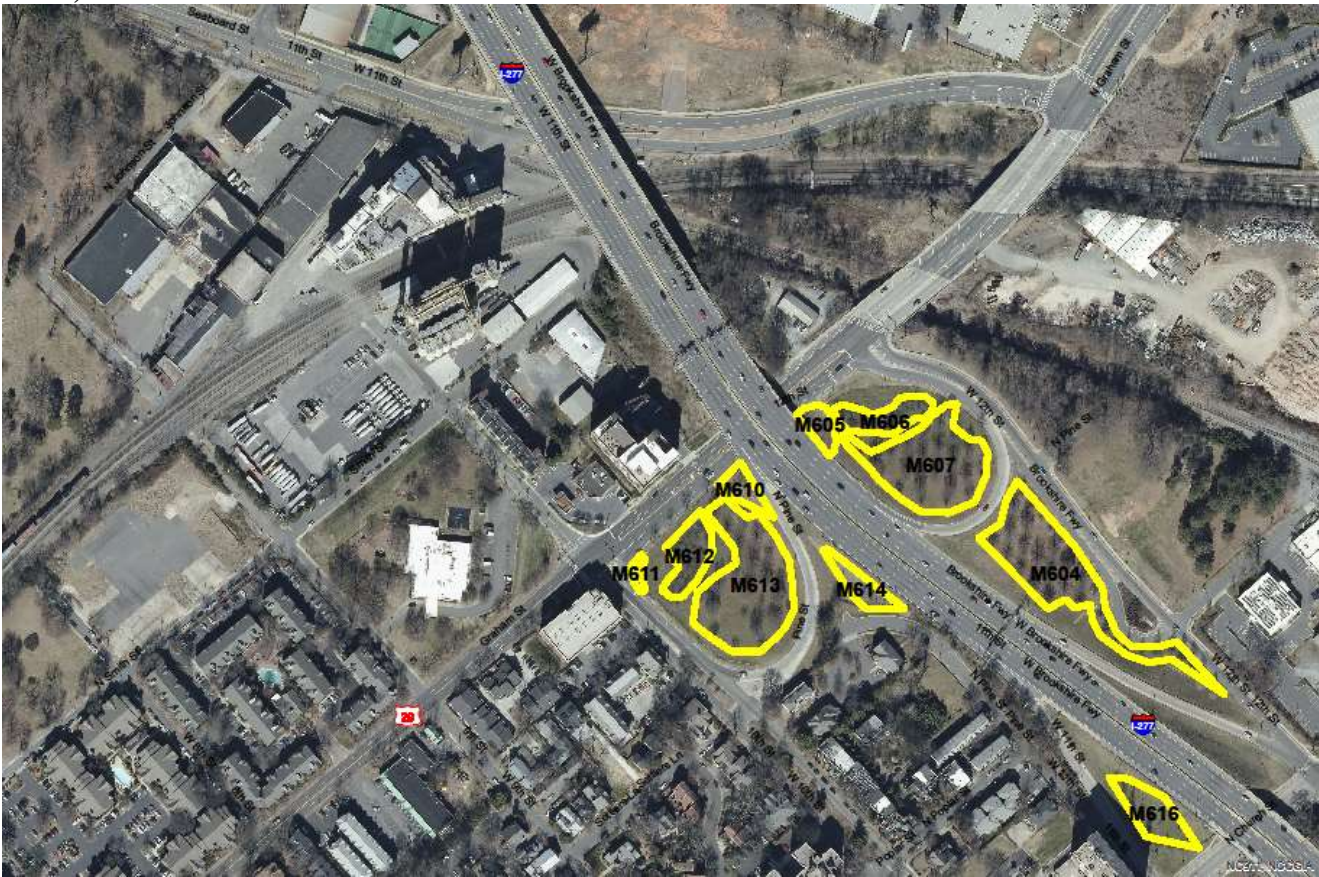
I-277, 10th St. to Caldwell St.



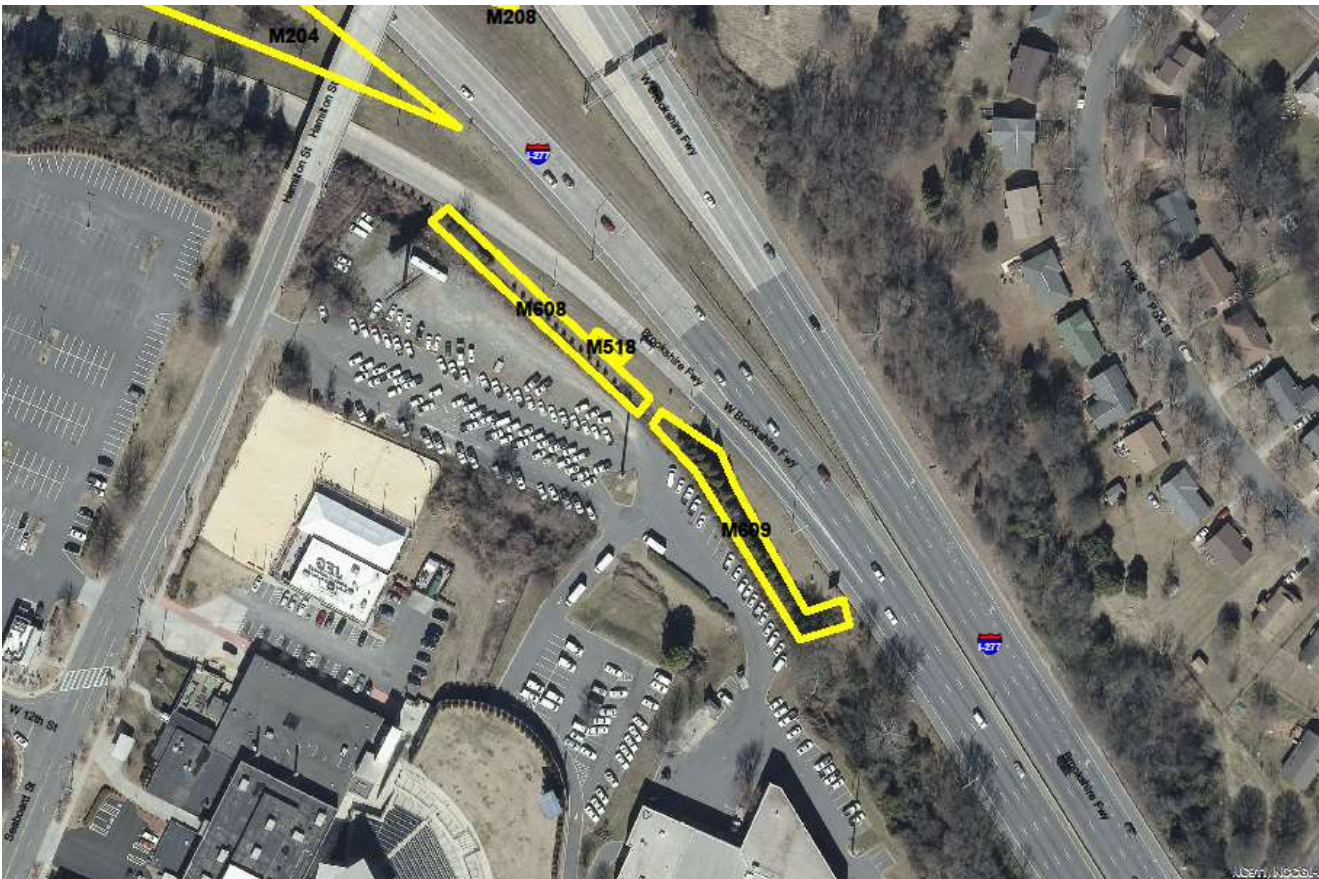
I-277, Caldwell St. to Church St.



I-277, Church St. to Graham St.



I-277 at Hamilton St.



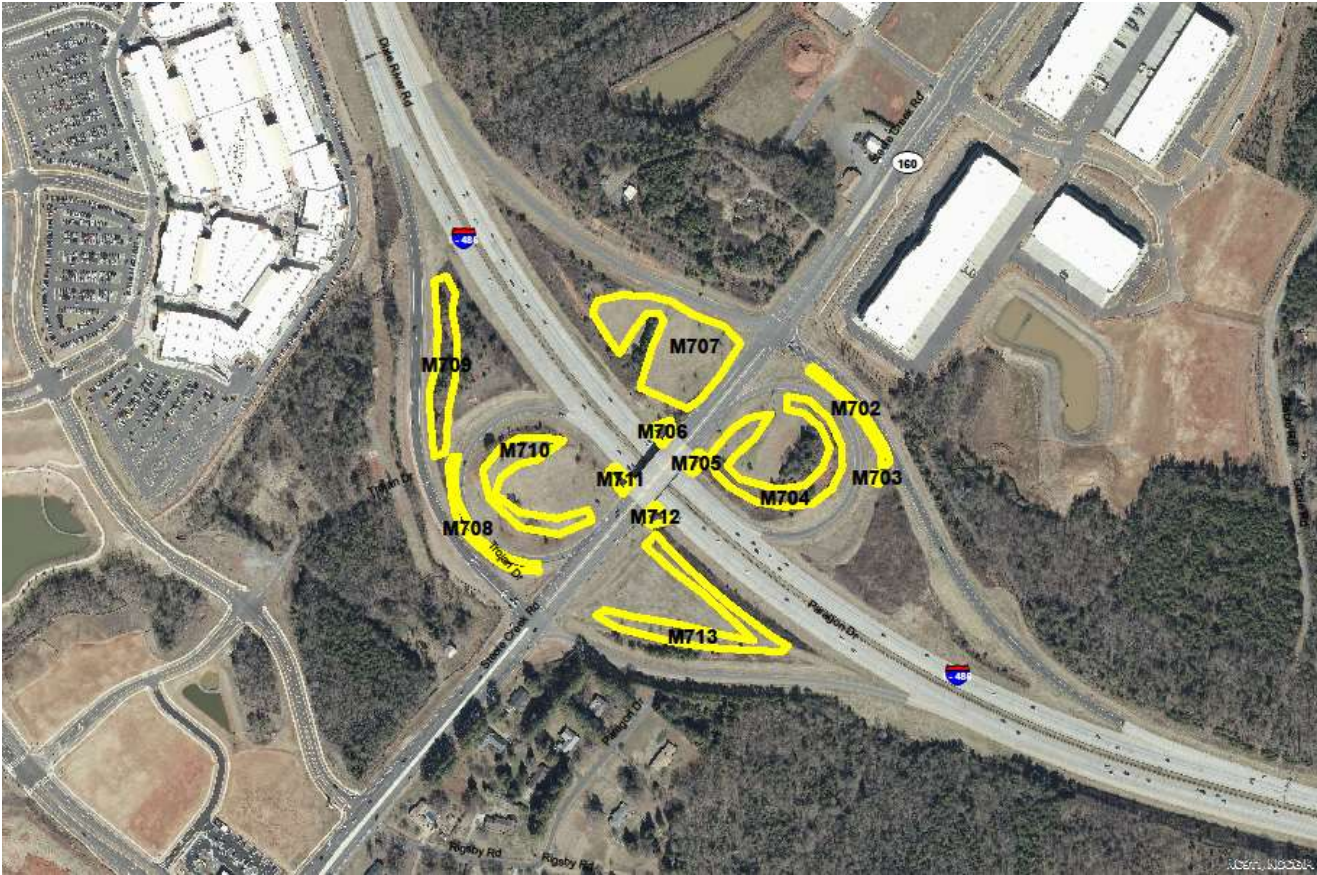
I-485 at South Tryon St., NC 49



I-485 at Arrowood Rd.



I-485 at Steele Creek Rd., NC 160



I-485 at West Blvd.



I-485 at Wilkinson Blvd., US 29, US 74



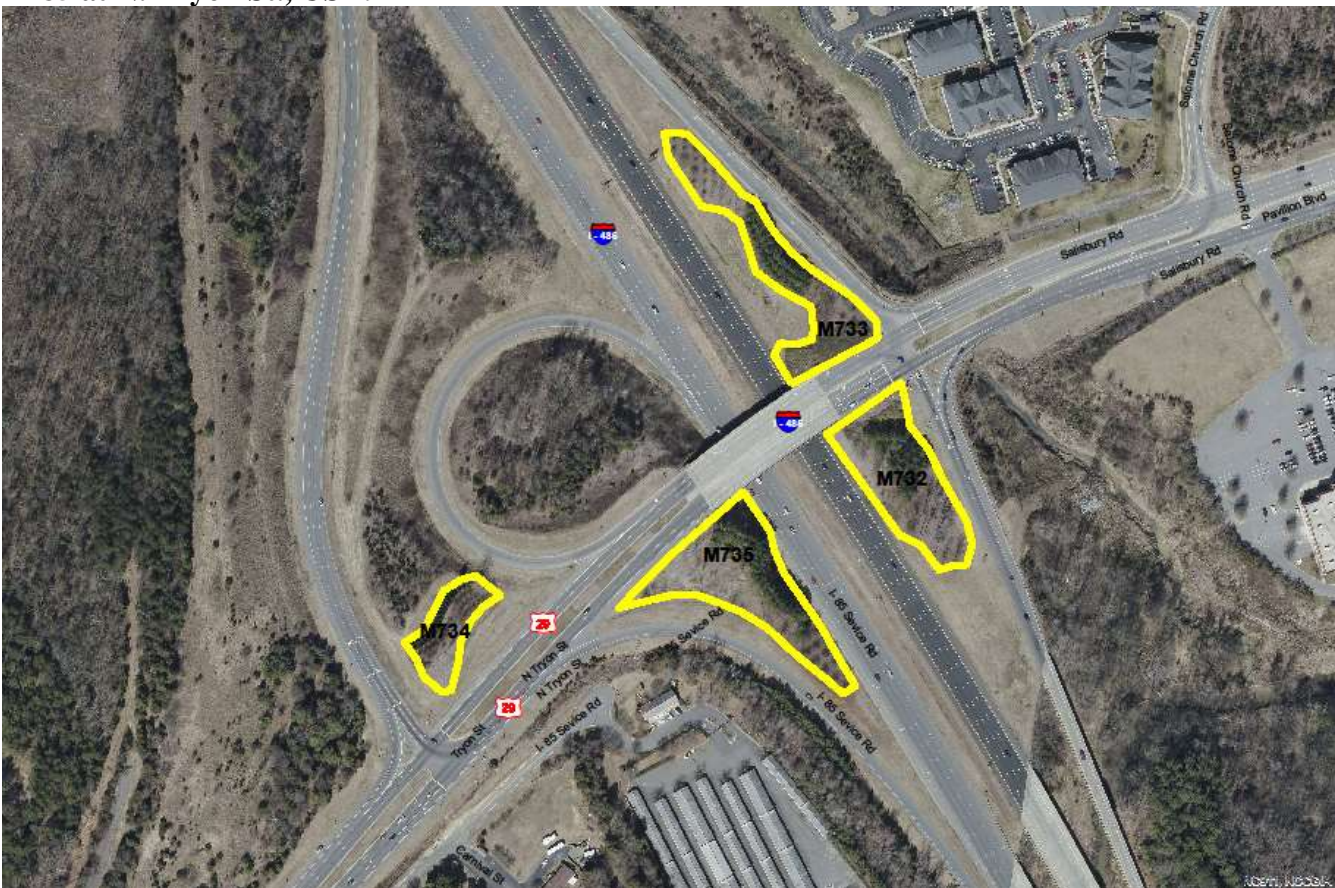
I-485 from Old Statesville Rd., NC 115 through Prosperity Ridge Rd.



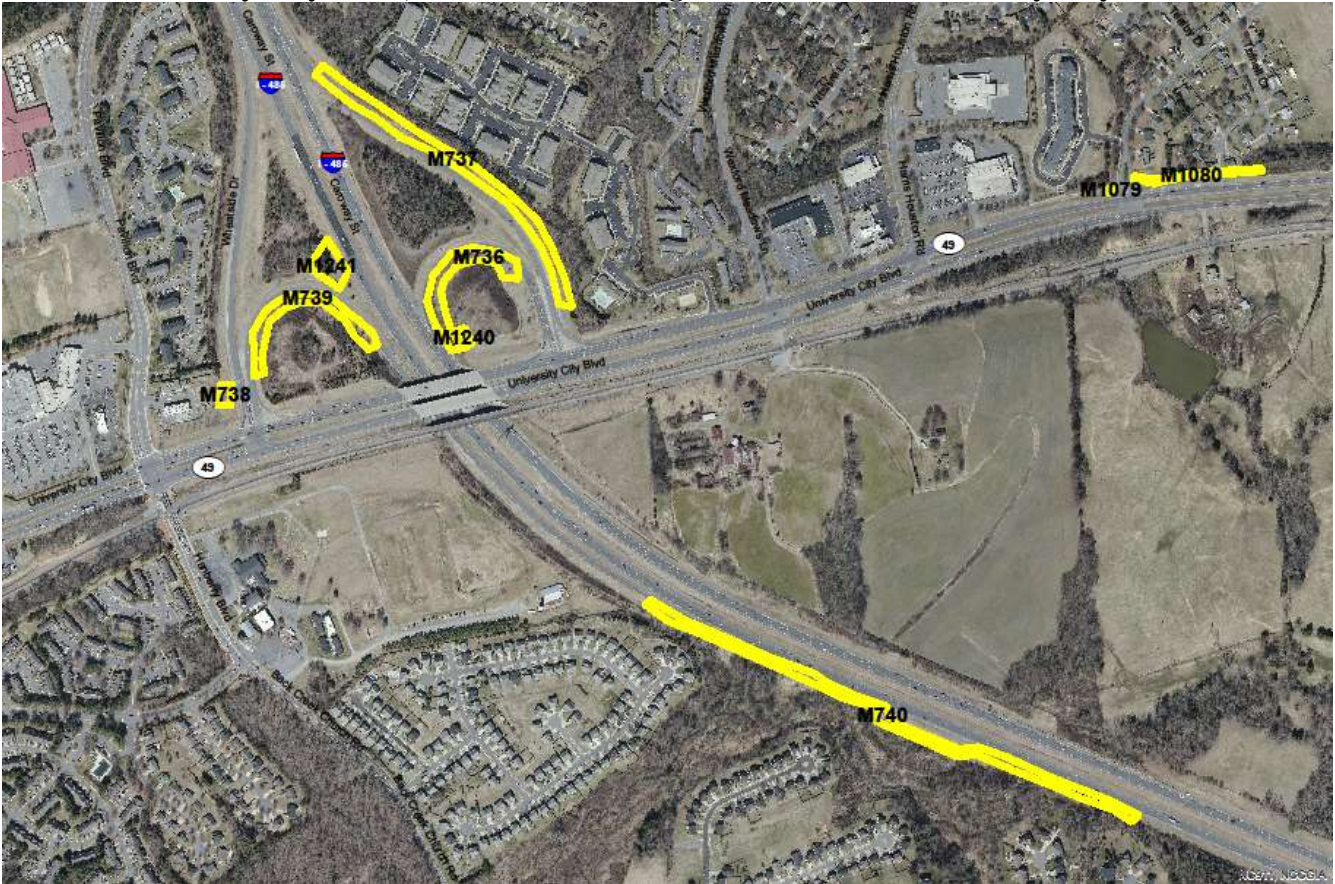
I-485 at Mallard Creek Rd.



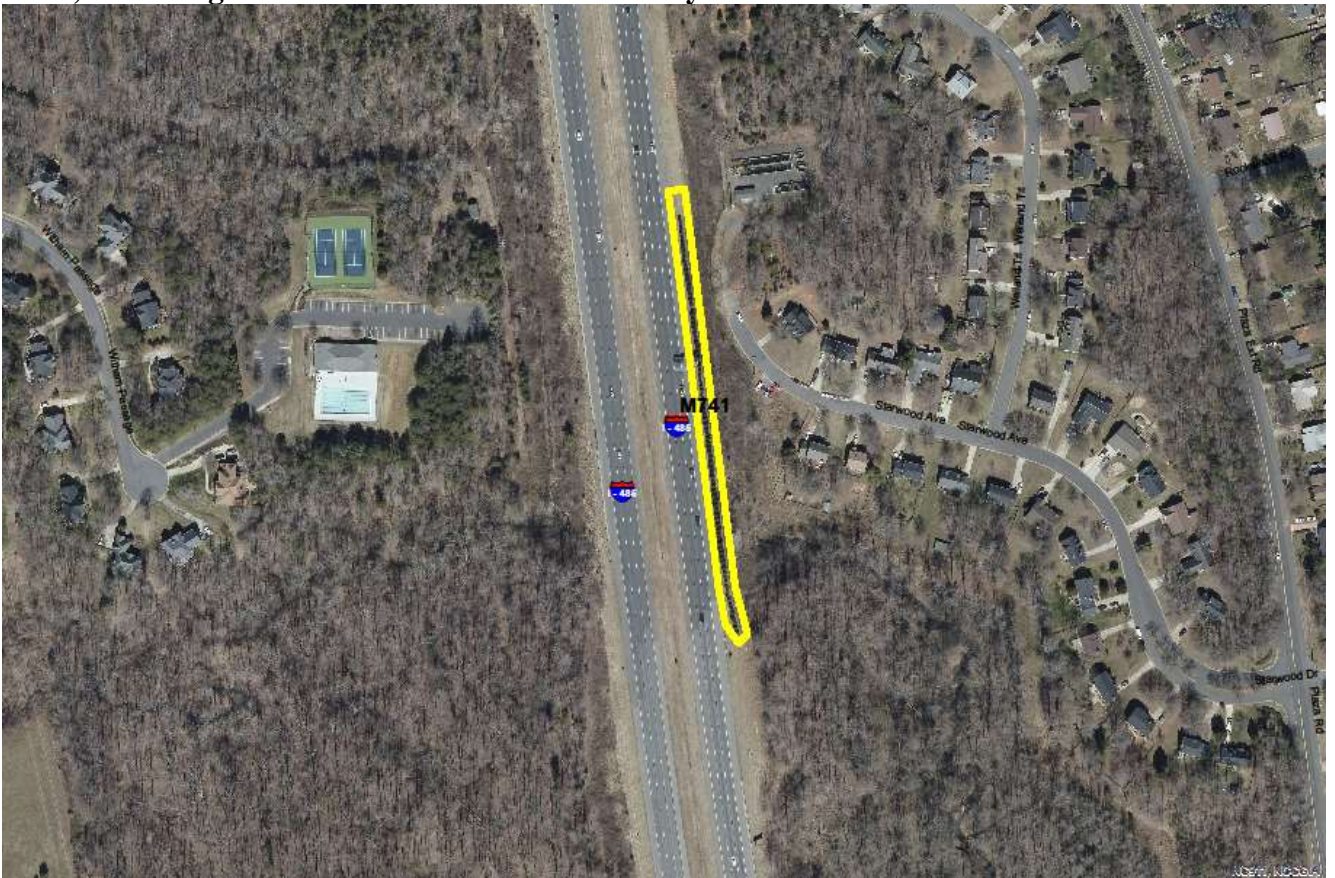
I-485 at N. Tryon St., US 29



I-485 at University City Blvd., NC 49 & Screening on 485 south of University City Blvd.



I-485, Screening between Plaza Rd. Ext. and Rocky River Rd.



I-485, Screening Between Harrisburg Rd. and Albemarle Rd.



I-485 at Albemarle Rd., NC 24/27



I-485 at Lawyers Rd.



I-485 at Idlewild Rd.



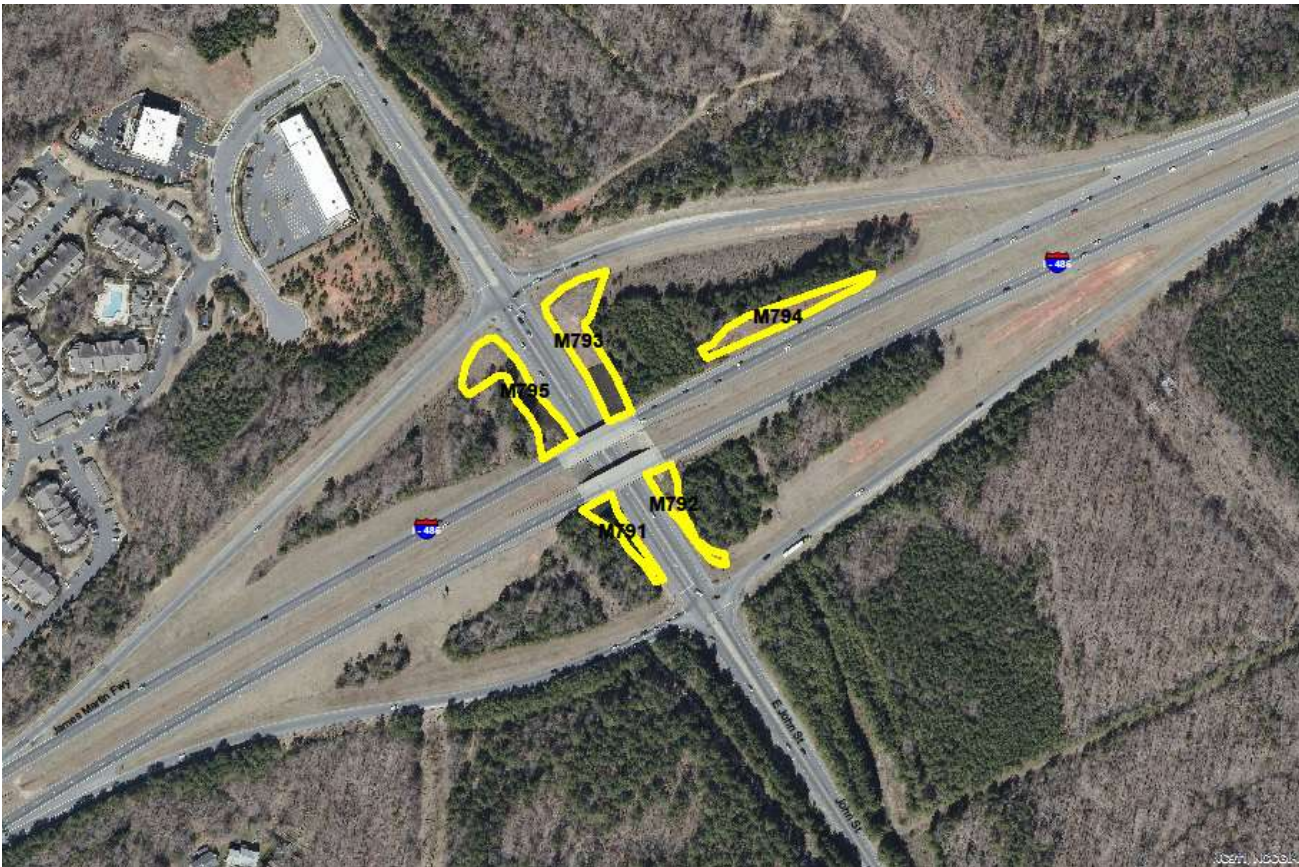
I-485, ROW fence line between Idlewild Rd. and Independence Blvd.



I-485 at Independence Blvd., US 74



I-485 at Old Monroe Rd./Johns St.



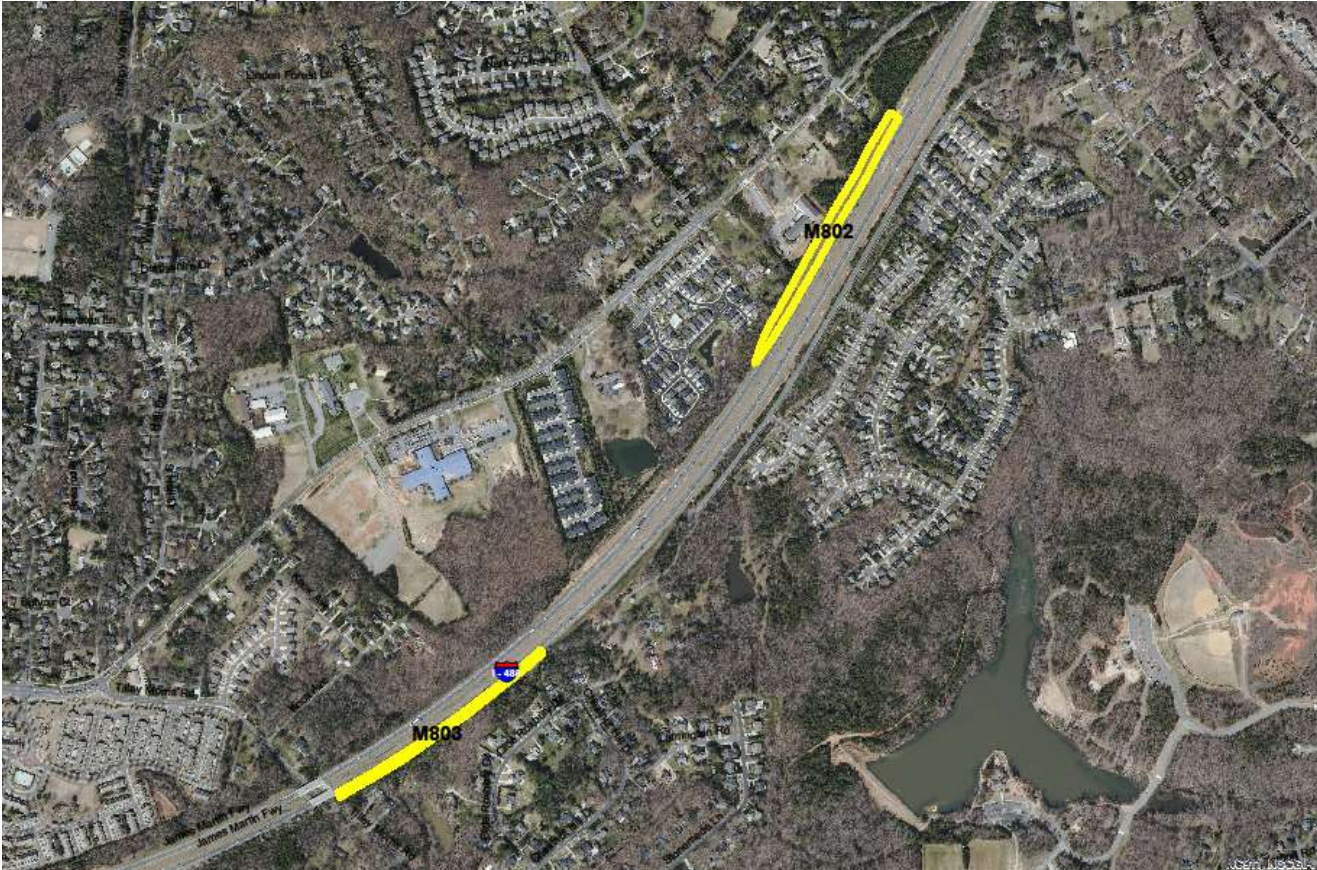
I-485, 1st Trees and Screenings between Johns St. and Providence Rd.



I-485, 2nd Screenings between Johns St. and Providence Rd.



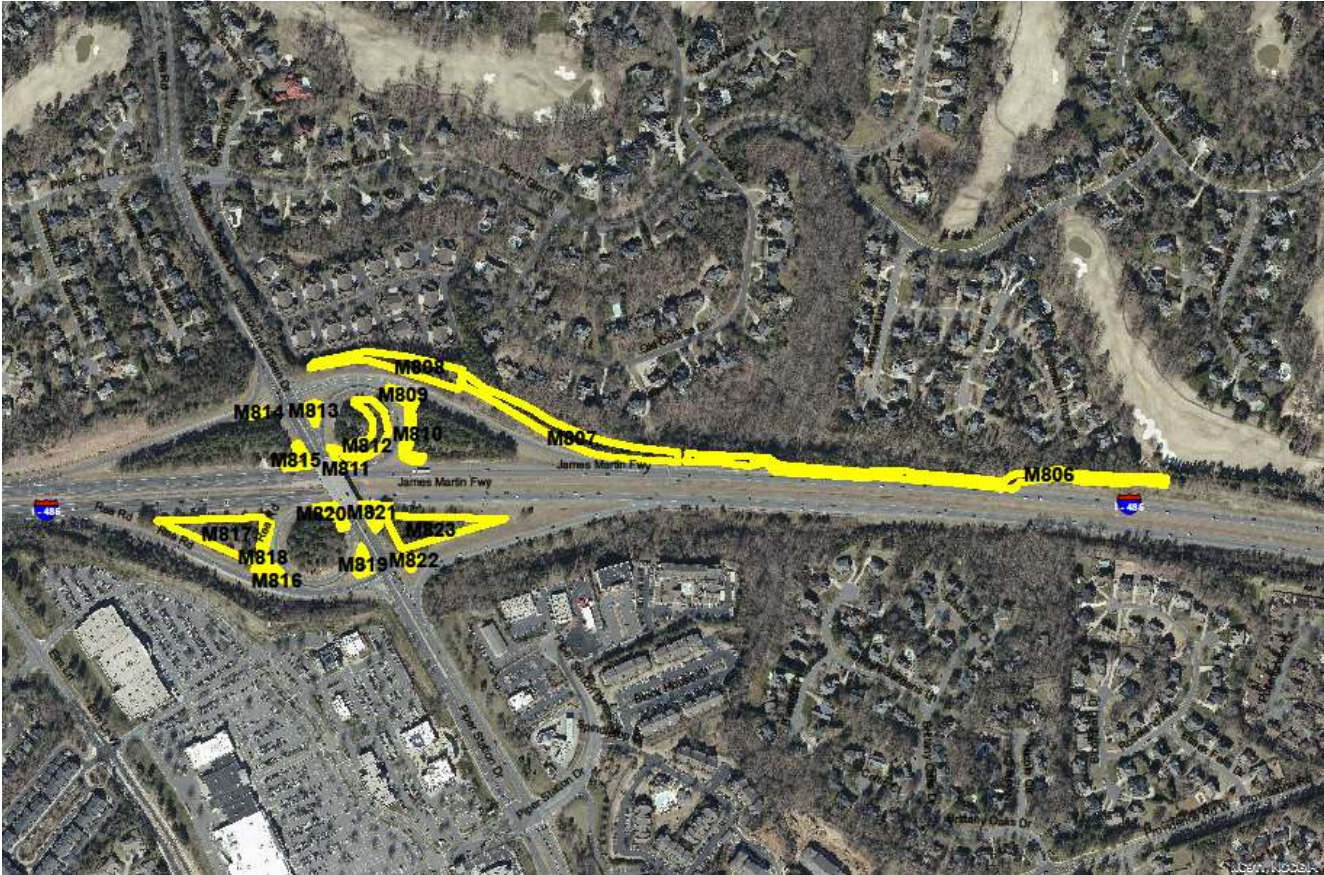
I-485, 3rd Screening between Johns St. and Providence Rd.



I-485 at Providence Rd., NC 16, and Providence Rd. down to Ardrey Kell Rd.



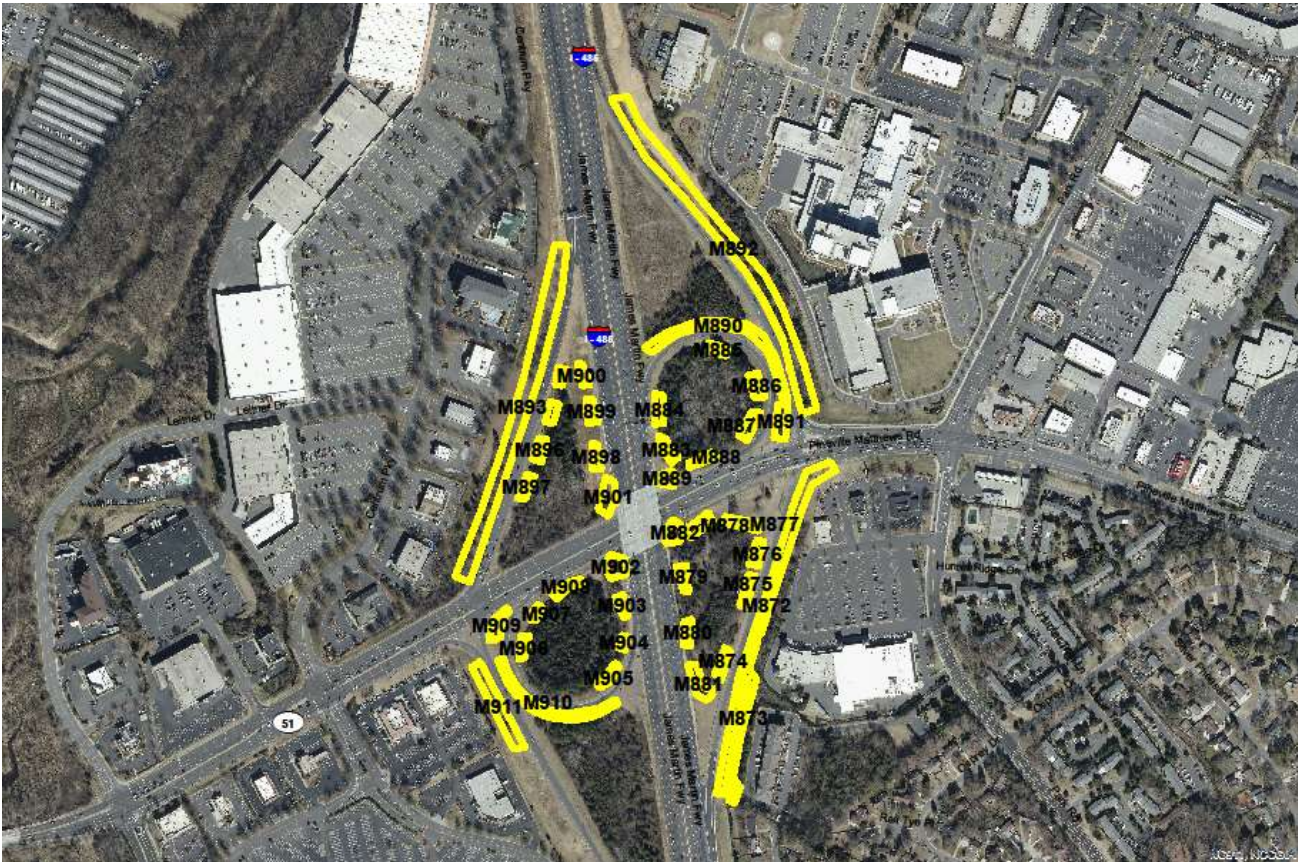
I-485 Screenings and Rea Rd.



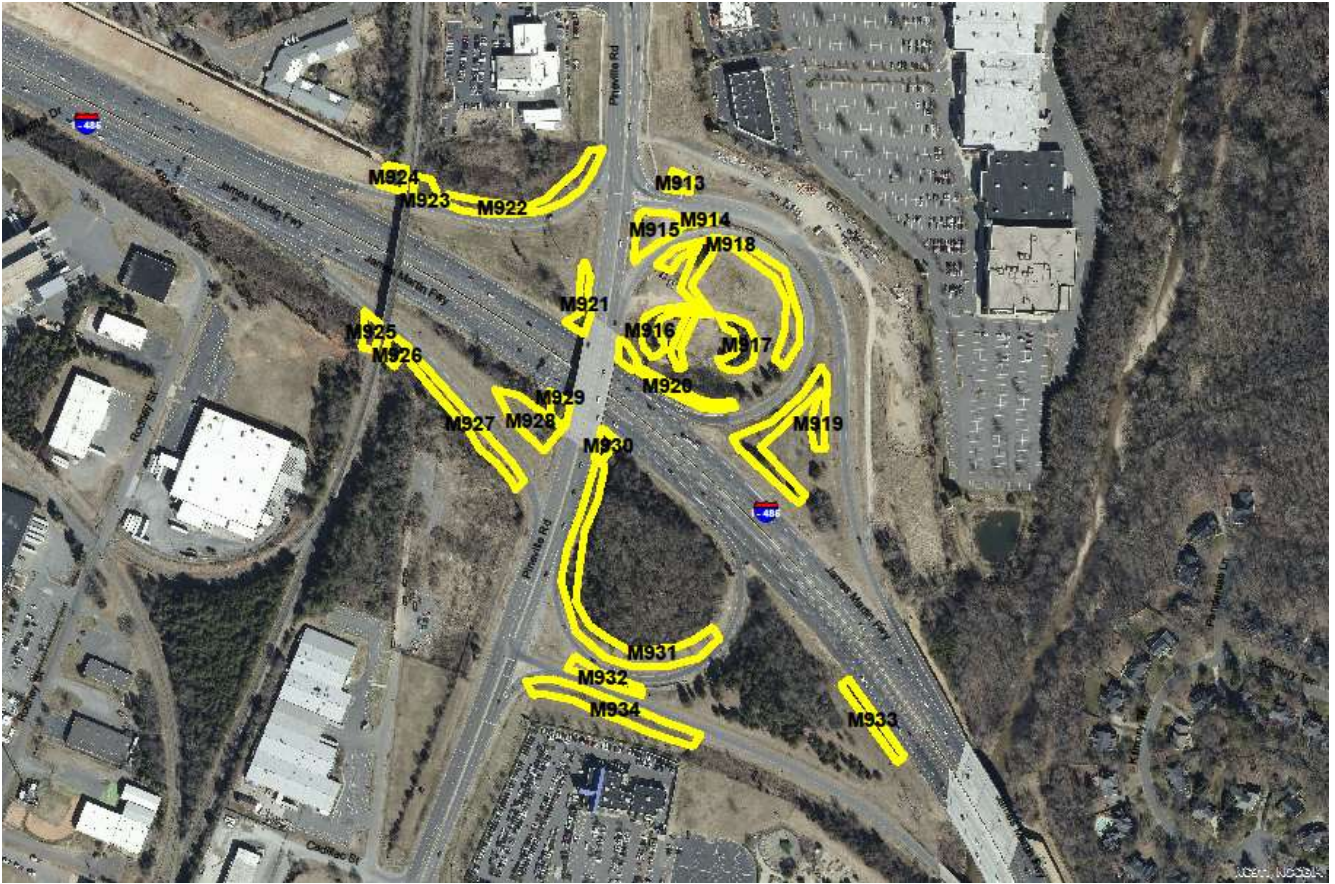
I-485, wall between Rea Rd. and Johnston Rd., and Johnston Rd., US 521



I-485 at NC 51 in Pineville



I-485 at South Blvd.



I-485 at Westinghouse Blvd.



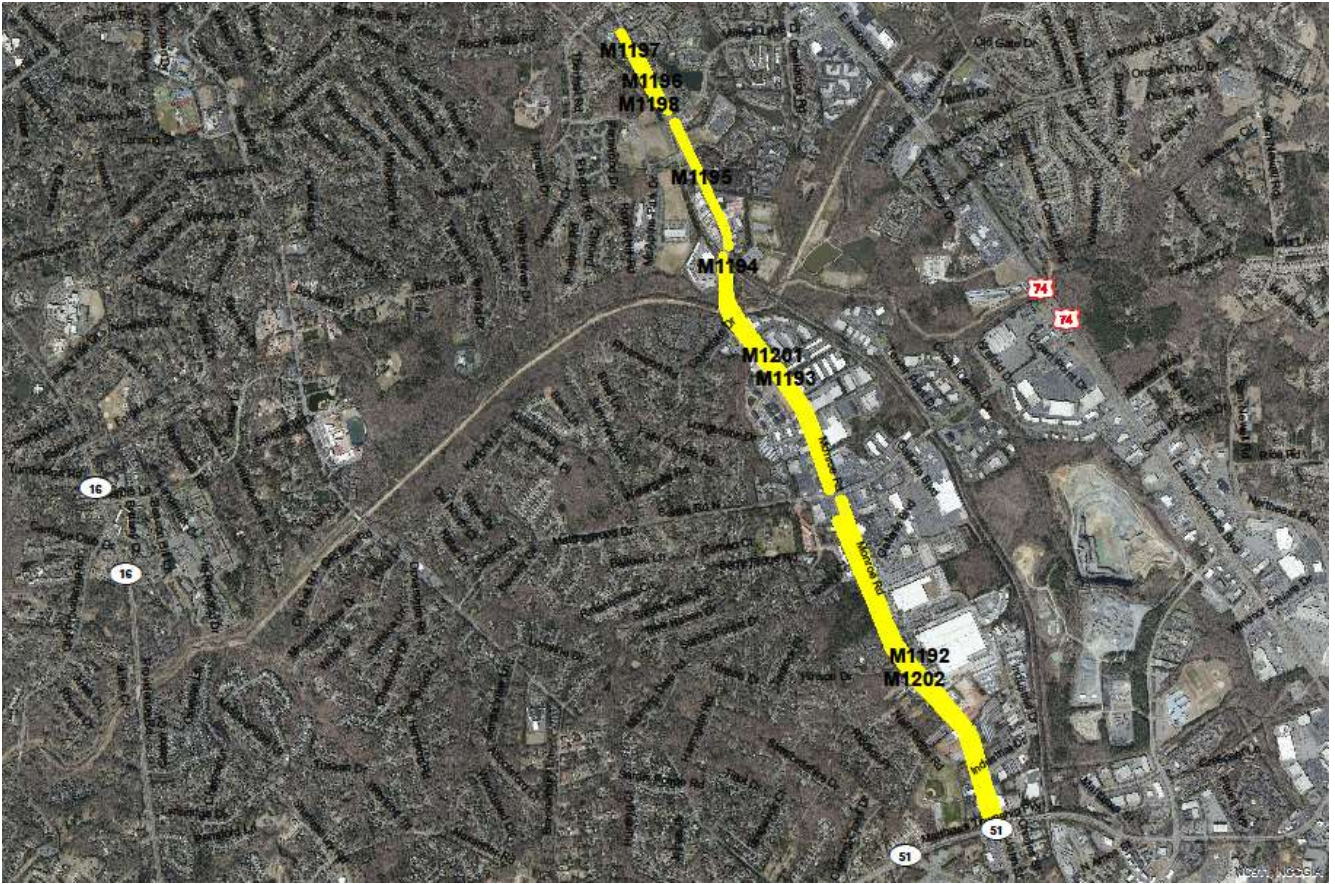
I-485 at Nations Ford Rd.



US 521, Johnston Rd., From Providence Rd. West to SC Line



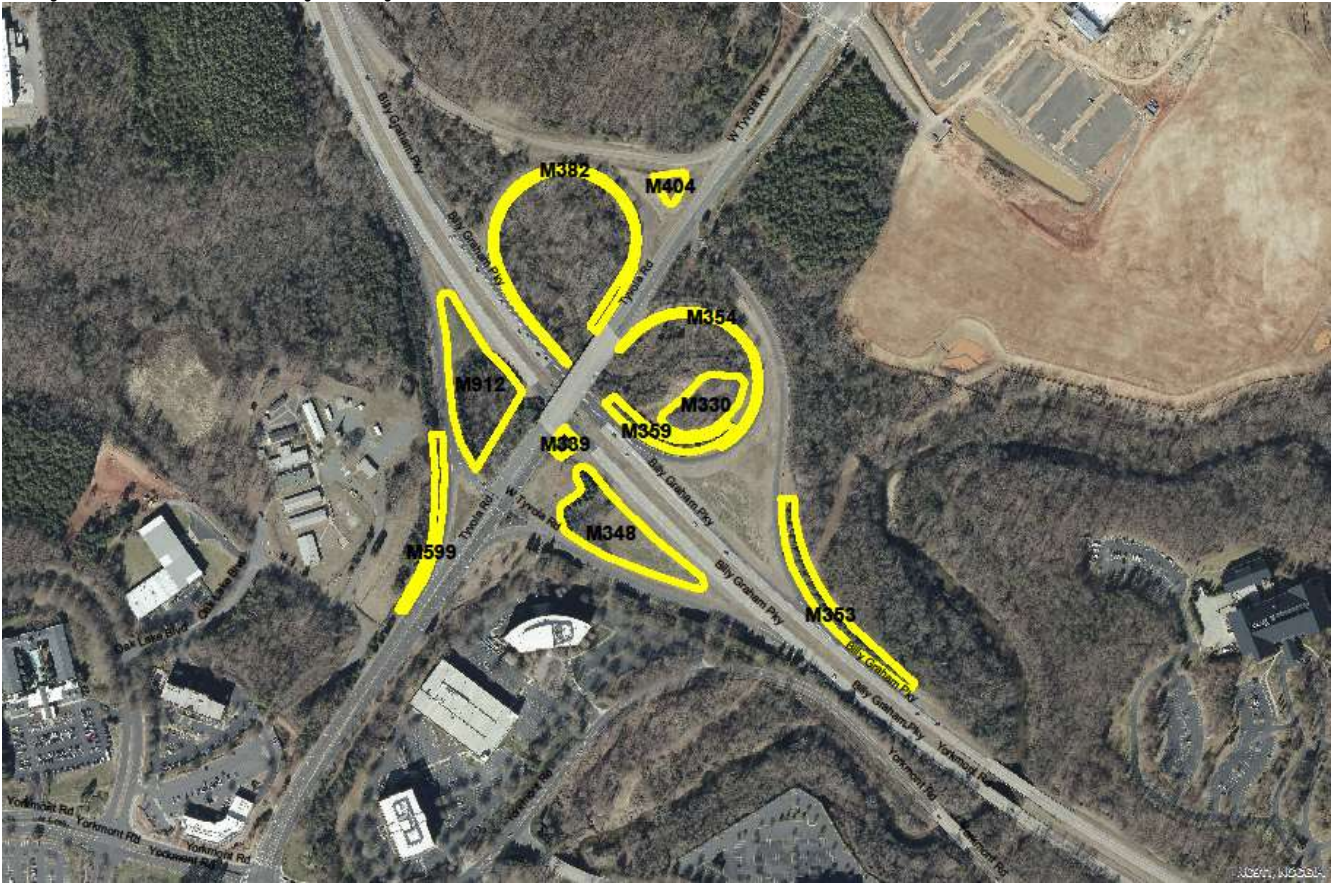
Old Monroe Rd.



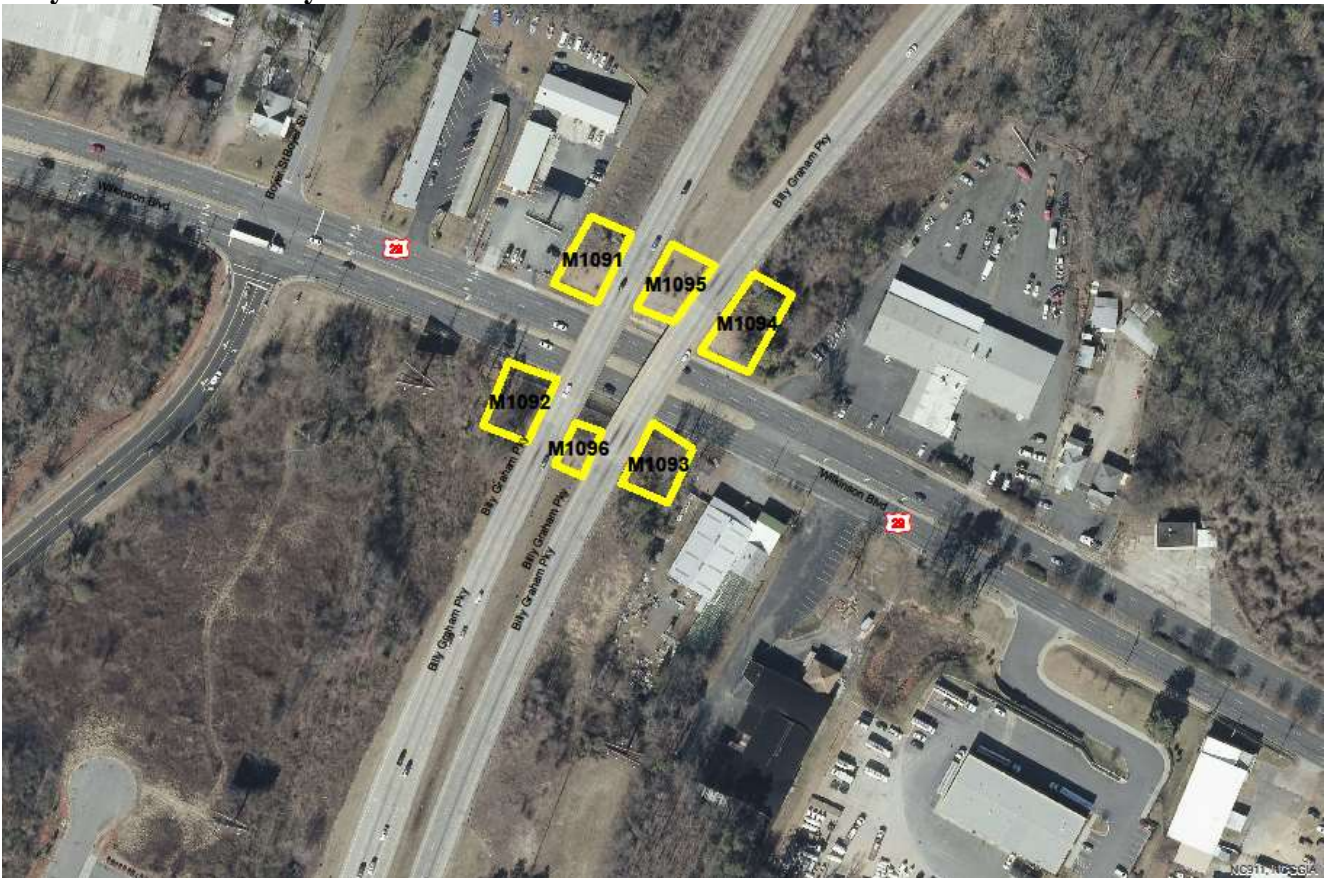
Billy Graham Parkway, just north of S. Tryon St.



Billy Graham Parkway at Tyvola Rd.



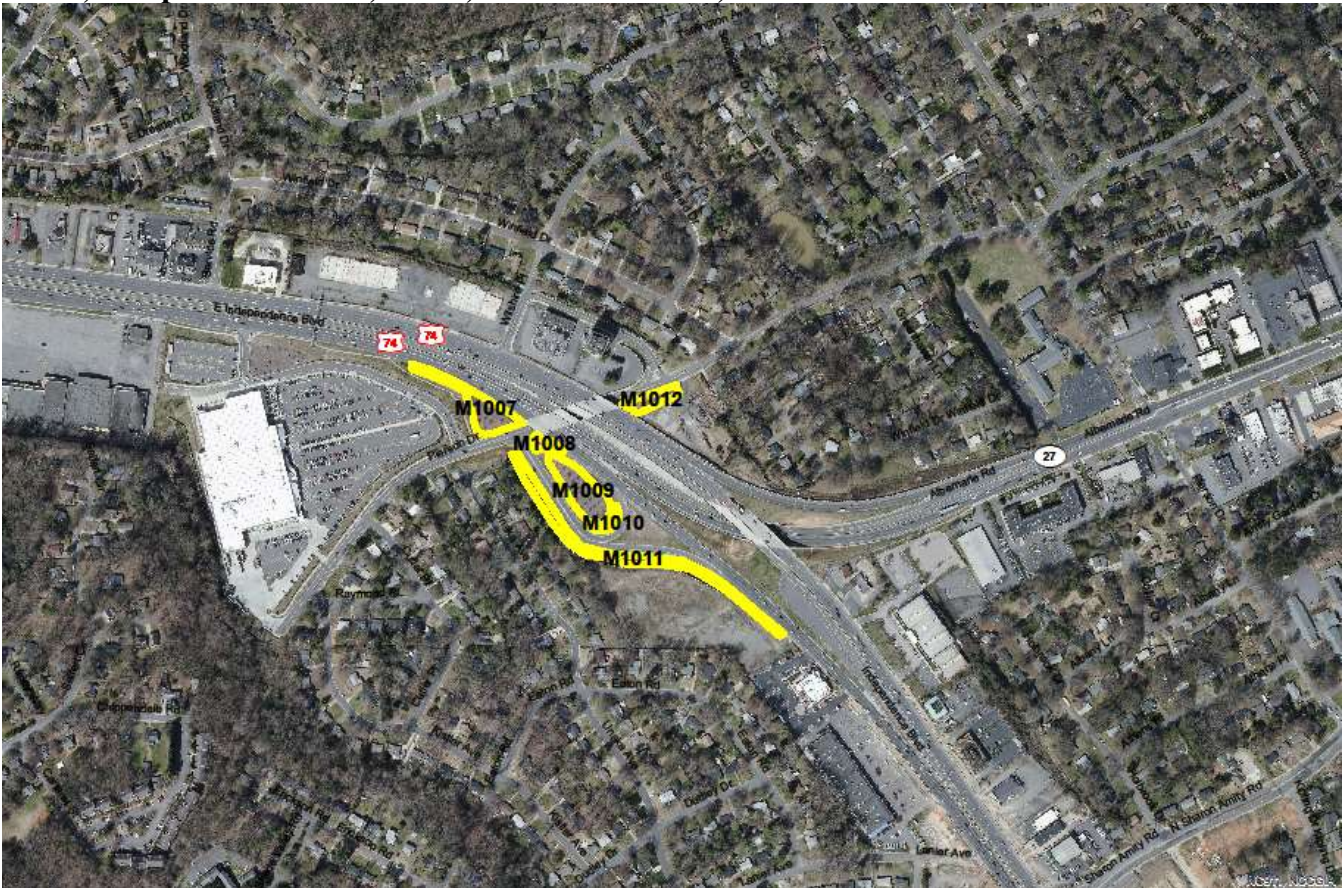
Billy Graham Parkway at Wilkinson Blvd.



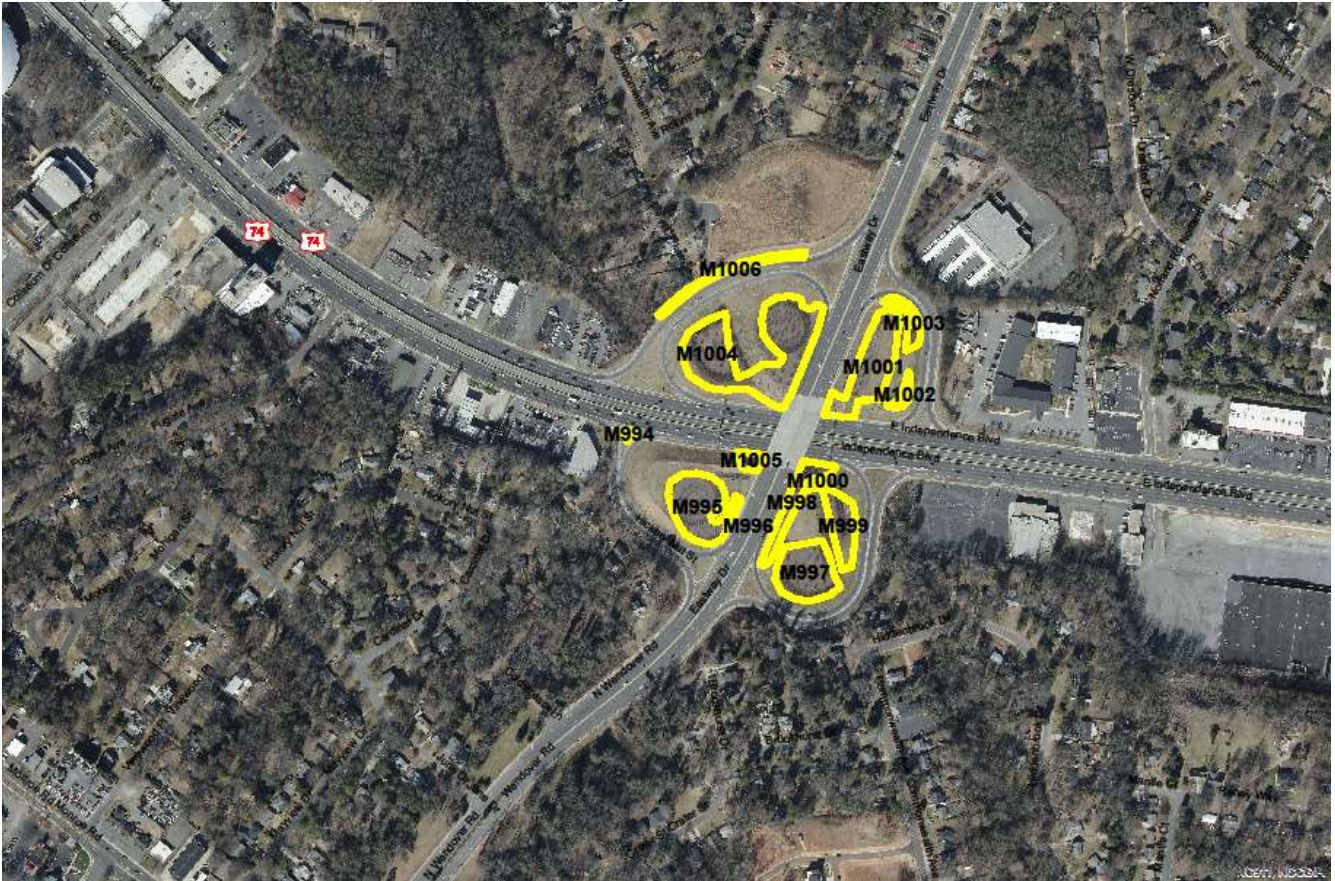
US 74, Independence Blvd., Old NC 51, and new NC 51



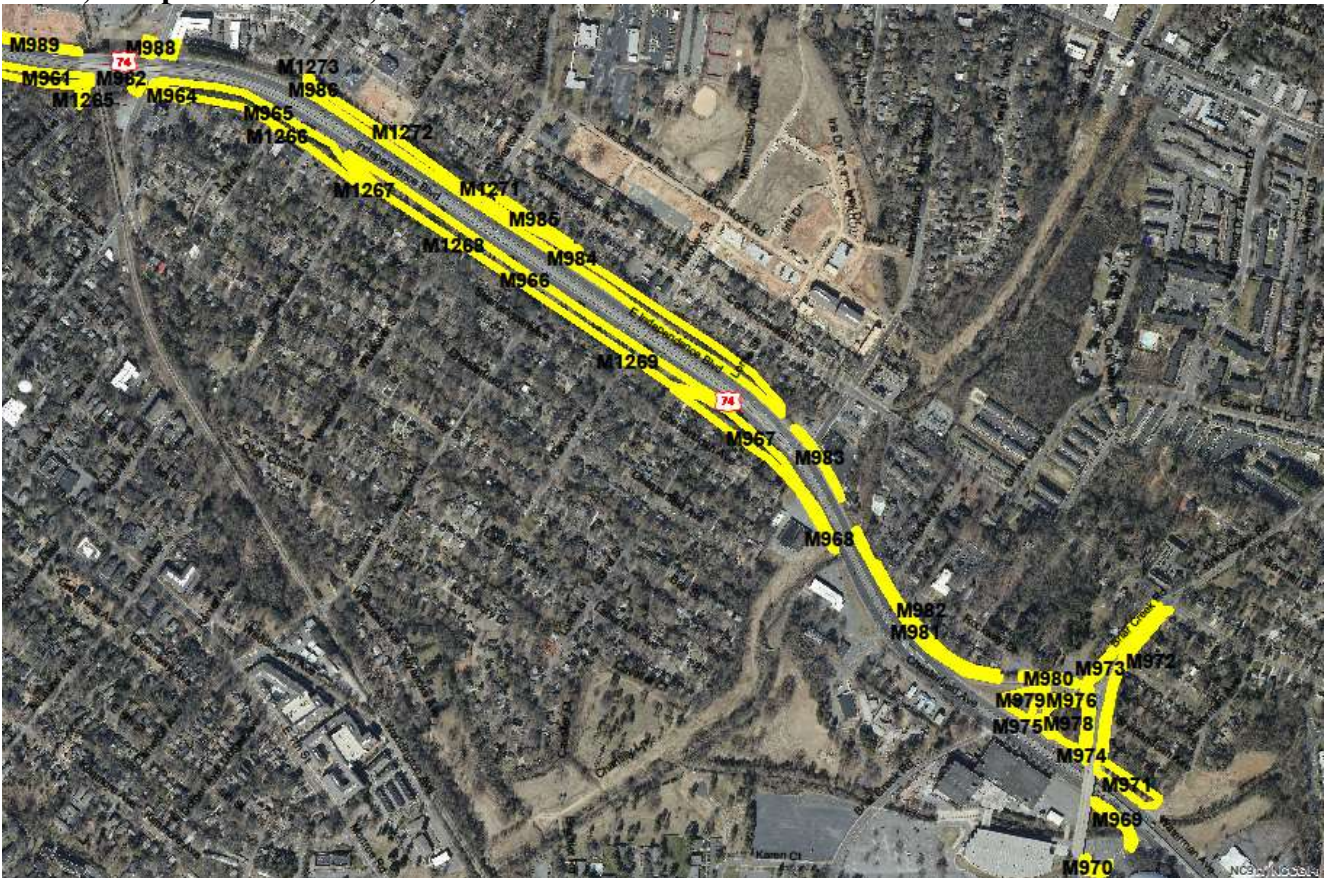
US 74, Independence Blvd., US 74, at Albemarle Rd., NC 27



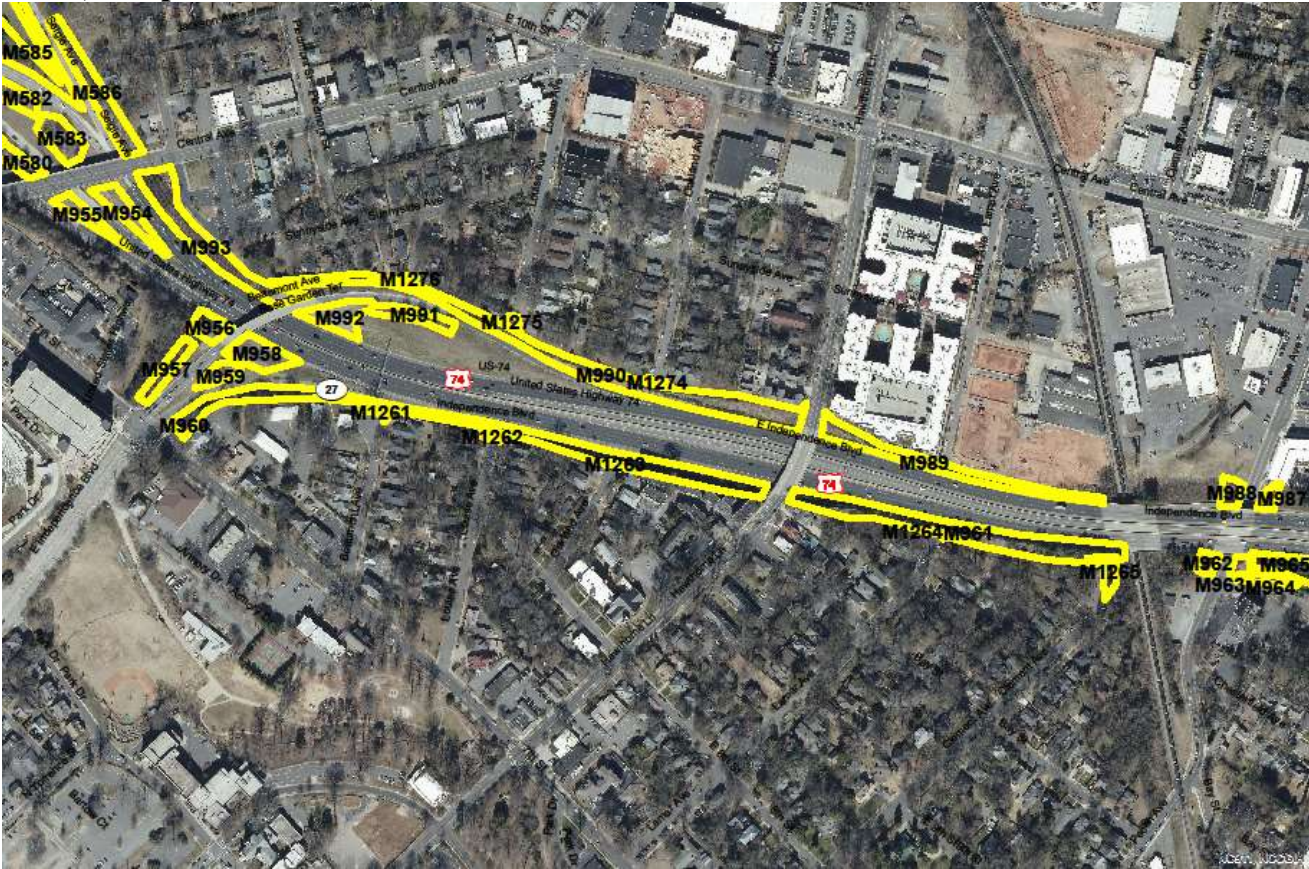
US 74, Independence Blvd., US 74, at Eastway Dr./Wendover Rd.



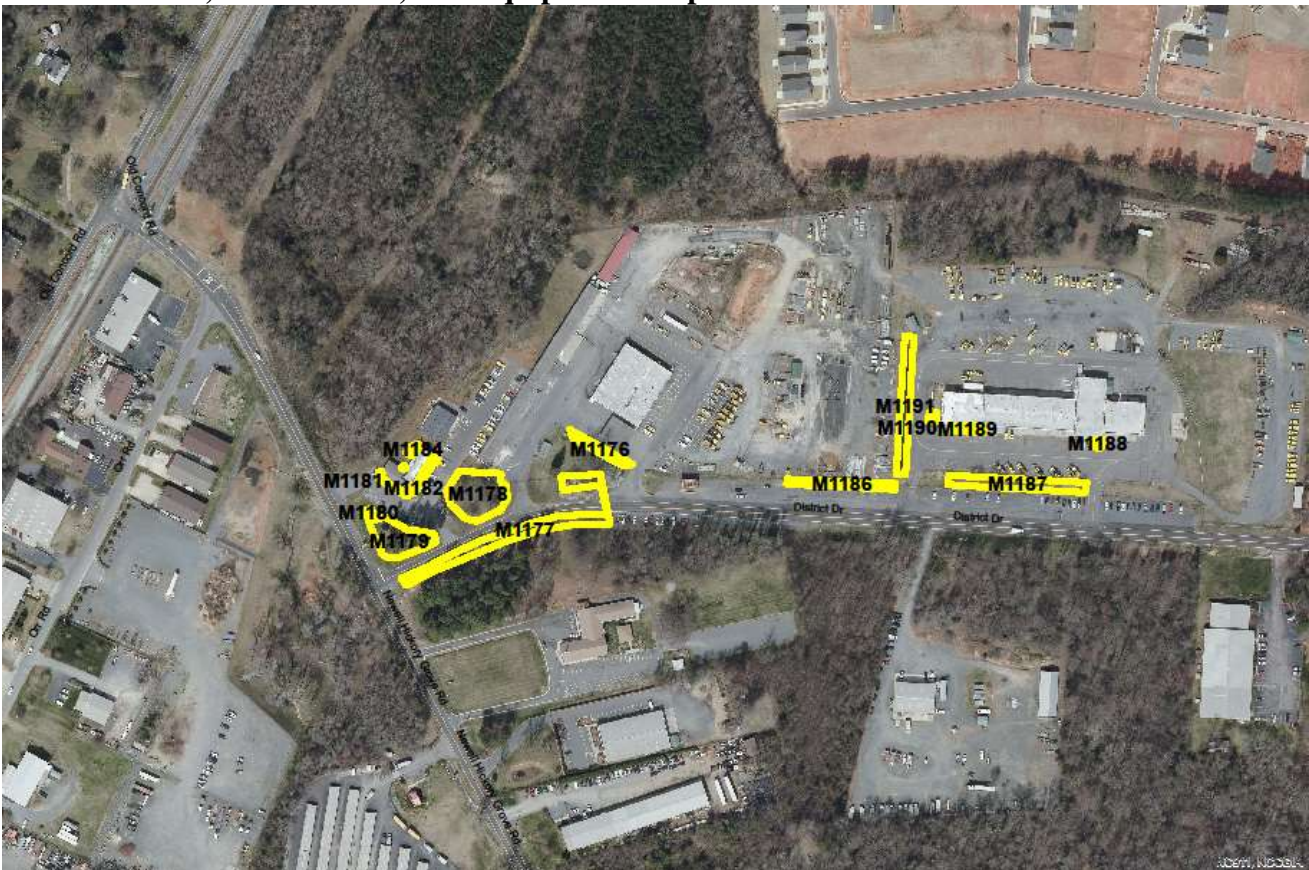
US 74, Independence Blvd., Briarcreek Rd. to Pecan Ave.



US 74, Independence Blvd., Pecan Ave. to Central Ave.



Newell District, Maintenance, and Equipment Shop



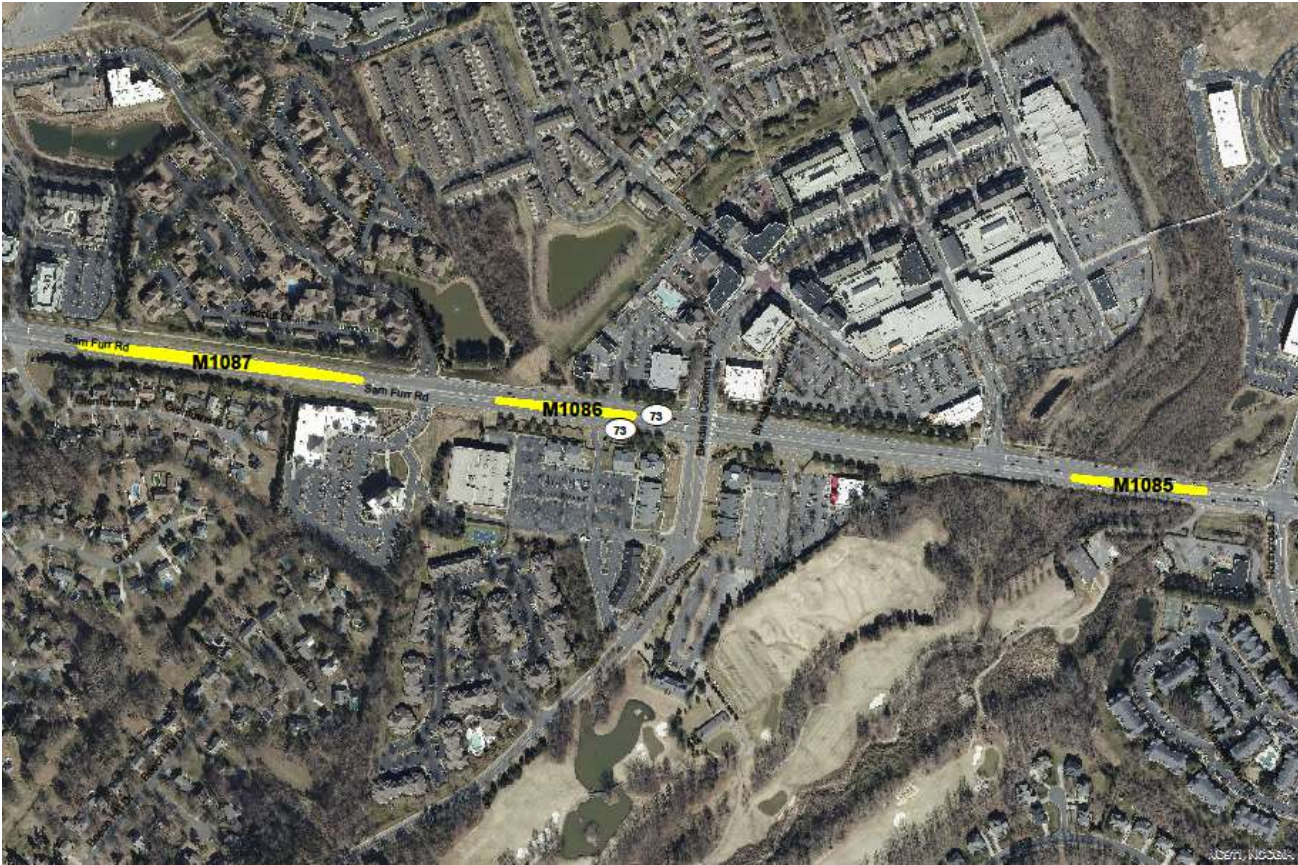
Mallard Creek Rd.



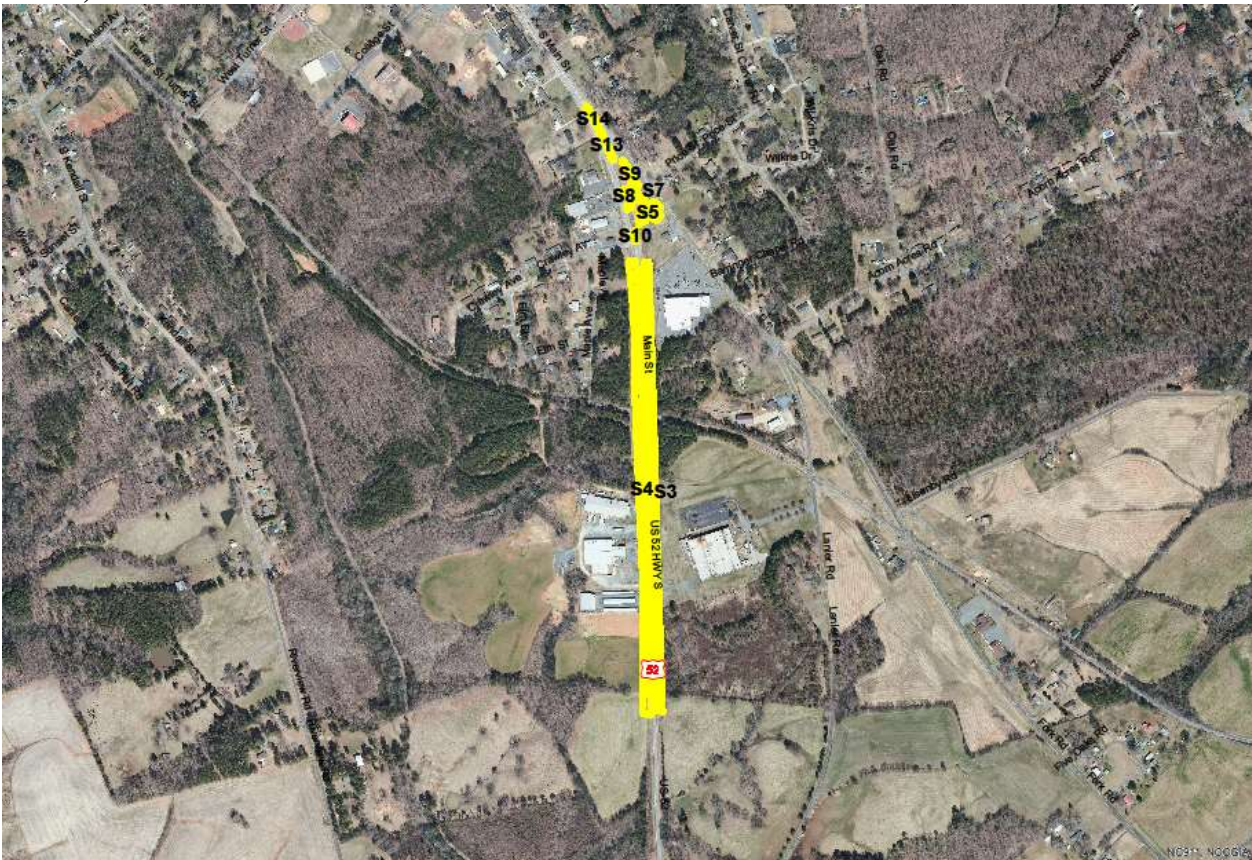
Paw Creek Maintenance



Sam Furr Rd.



**Stanly County Locations
US 52, Norwood**



US 52 from NC 24/27 to Old Charlotte Rd. and 24/27 at Business 52



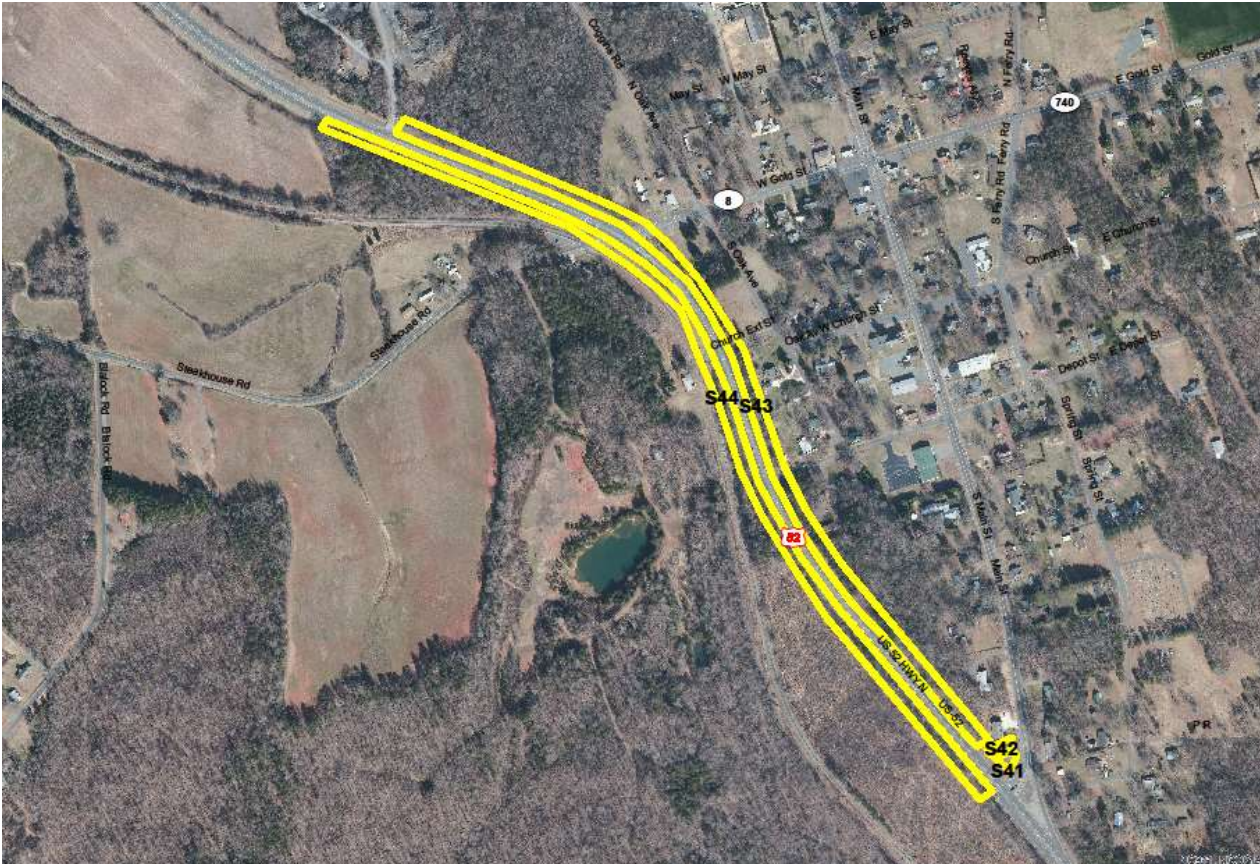
US 52 from Old Charlotte Rd. to Old Salisbury Rd., District Office, Division Office



US 52 from Old Salisbury Rd. to Snuggs St.



US 52 in New London



US 52 in Richfield



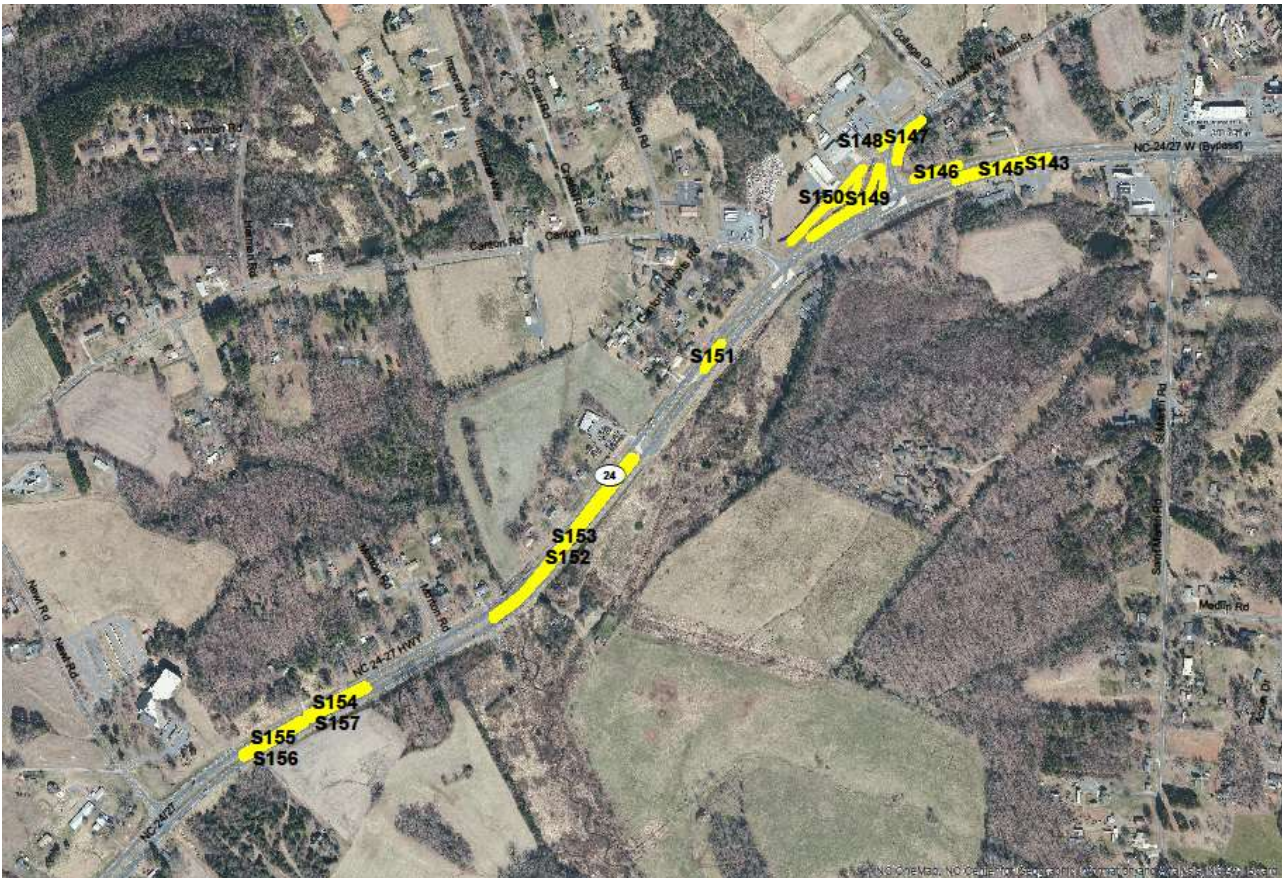
US 52, Pfeiffer



24/27 at the Pee Dee River



24/27 from West Main St. to Newt Rd.



NC 740 Badin Rd.



NC 740, Badin



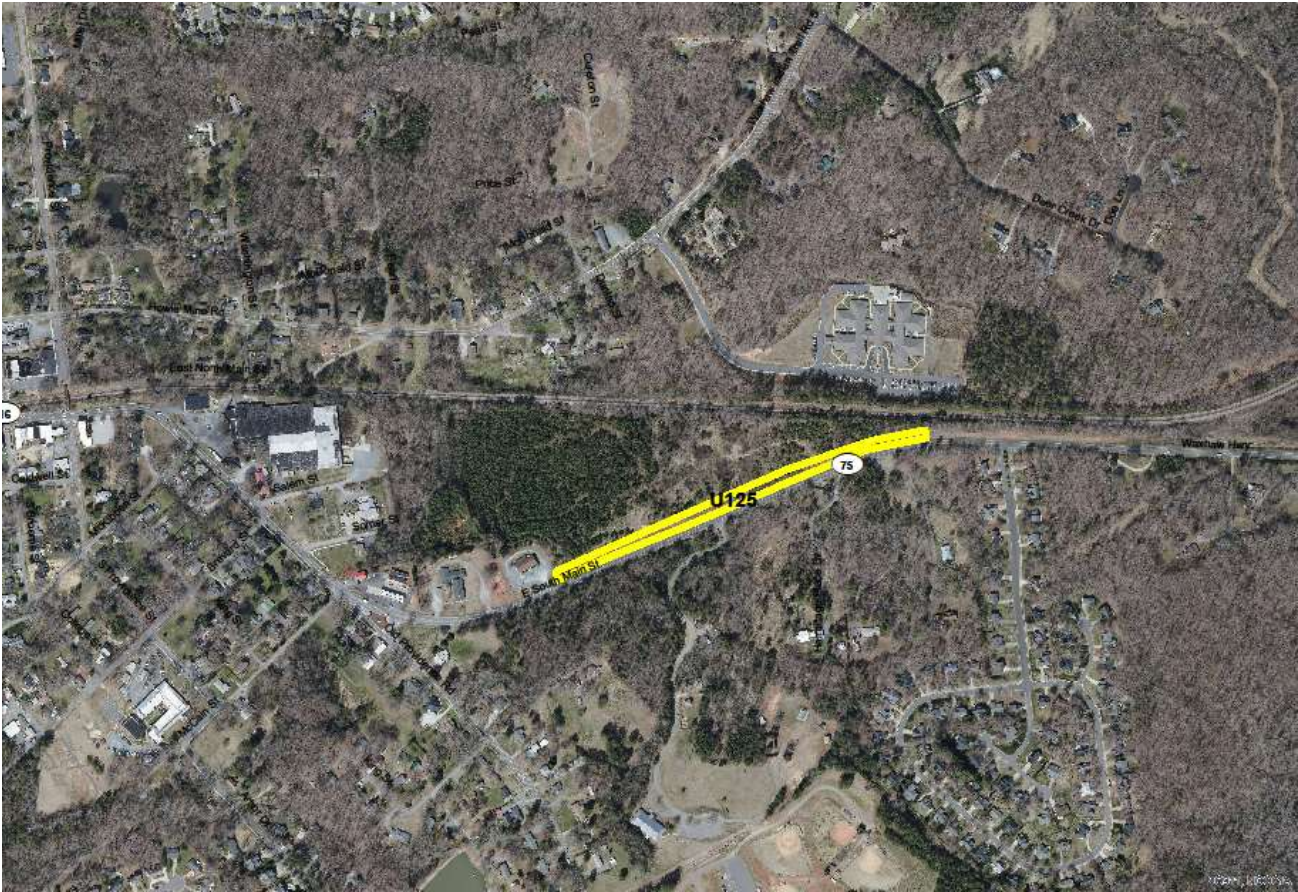
Stanly Airport



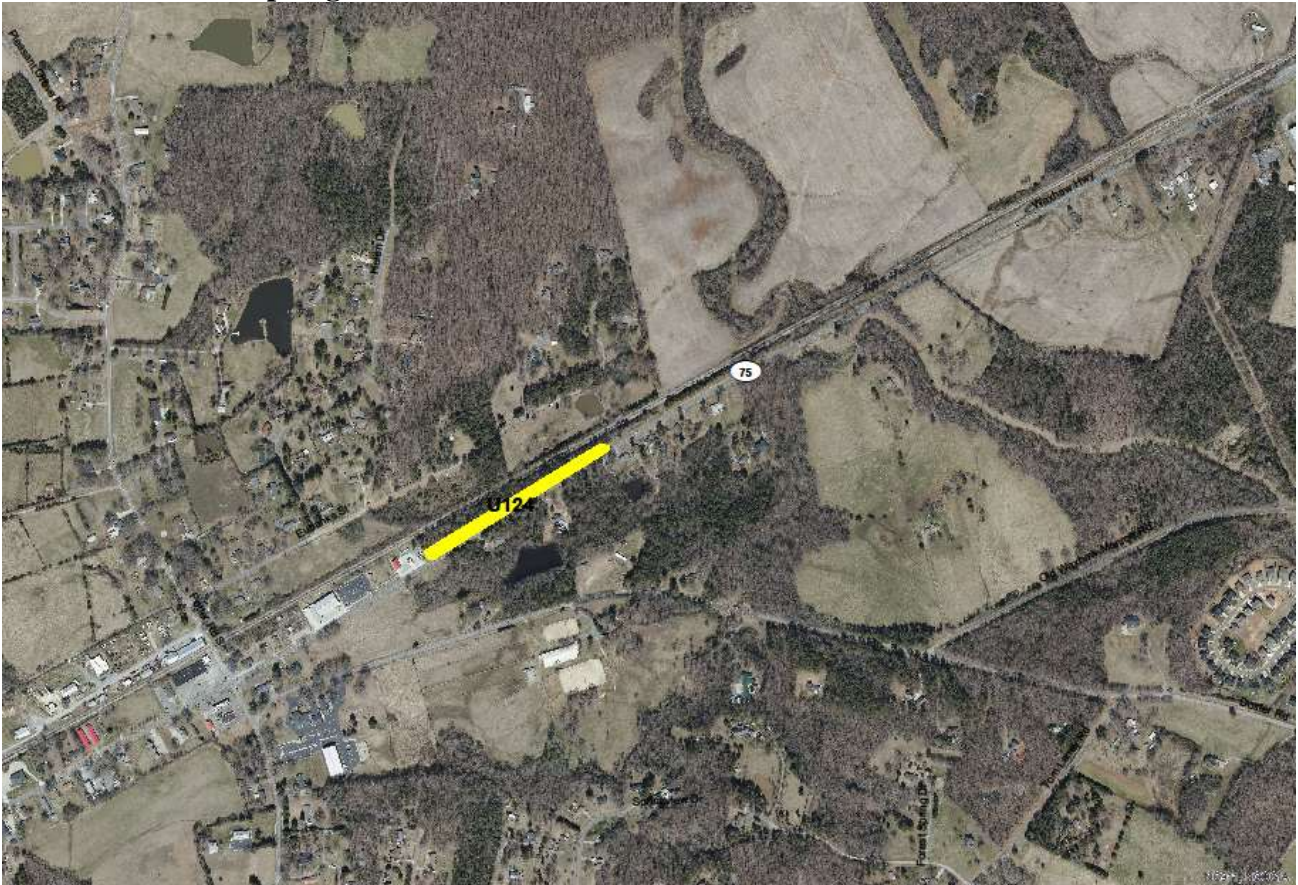
**Union County Locations
NC 16 in Weddington**



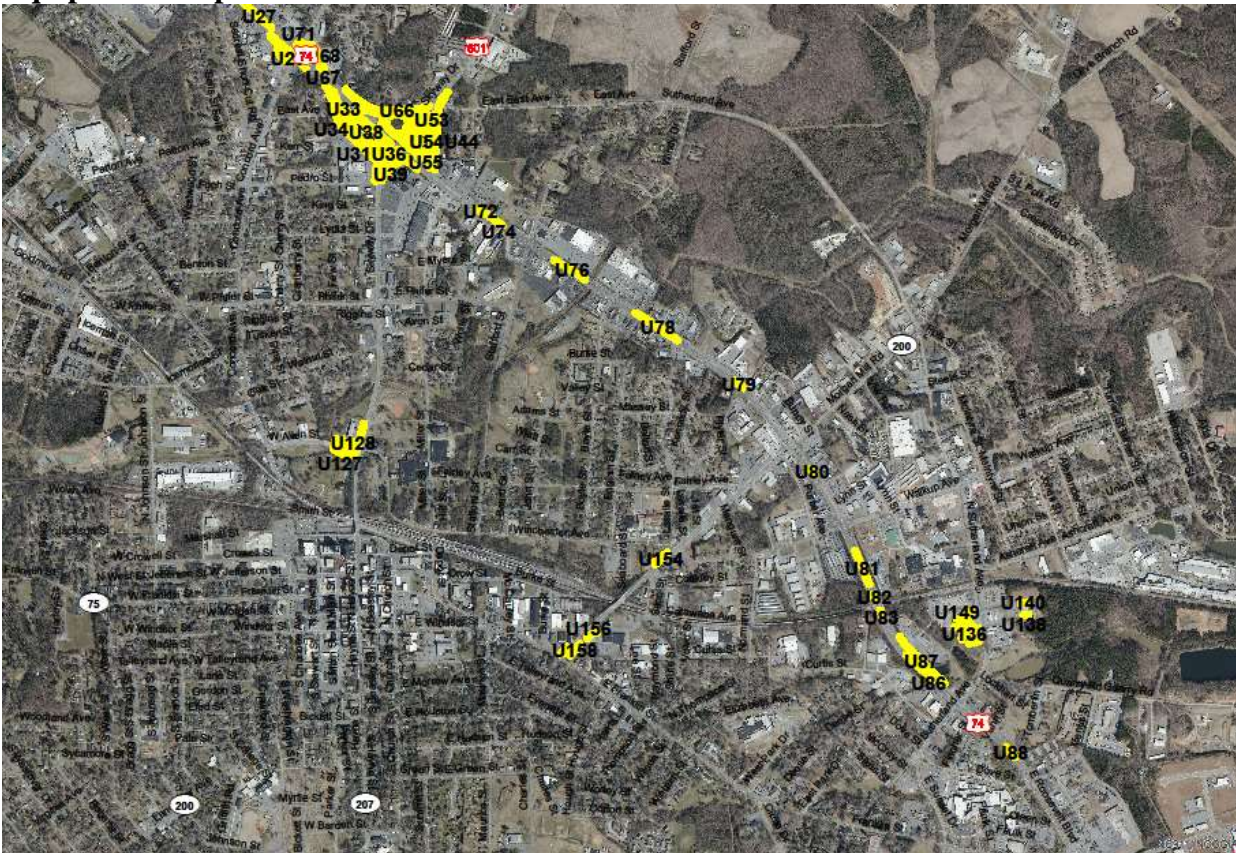
NC 75 in Waxhaw



NC 75 in Mineral Springs



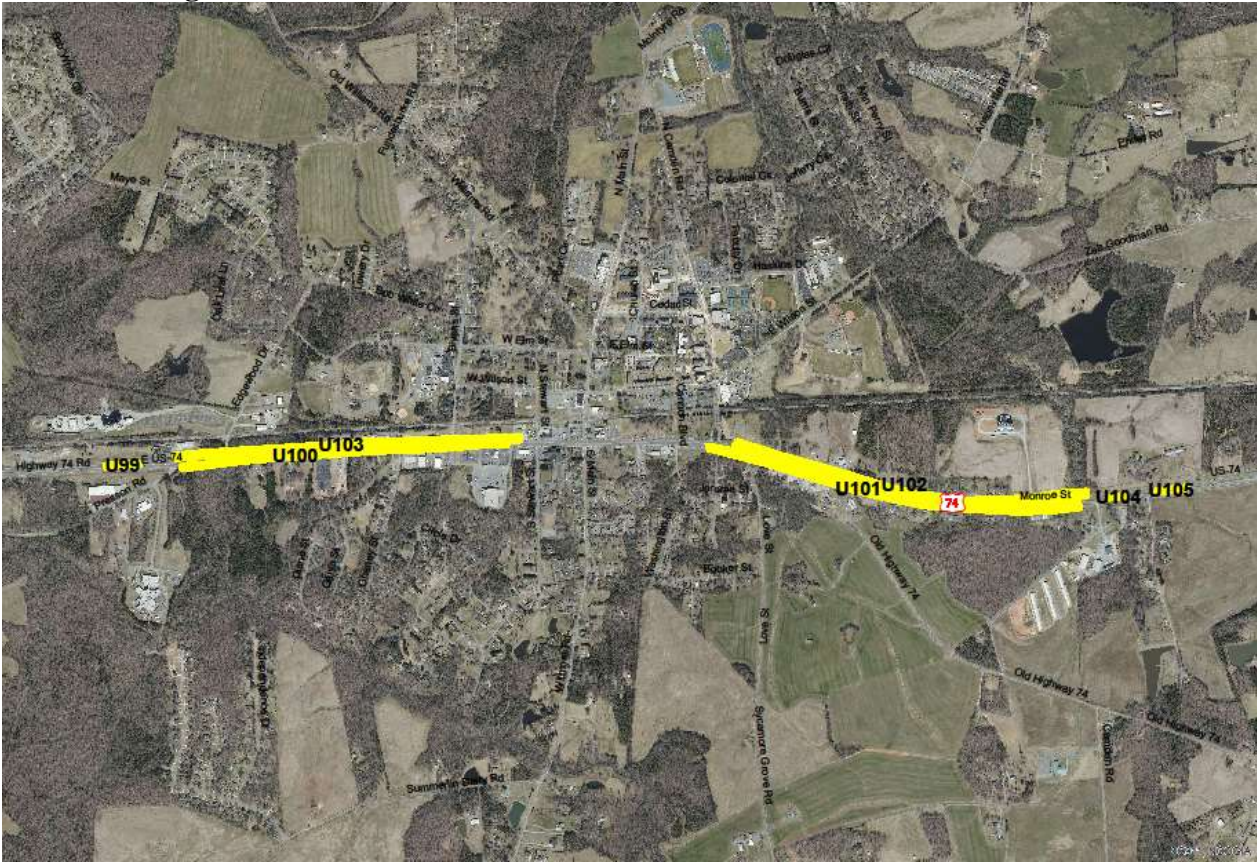
Monroe, from Cabarrus Ave. Bridge to Hospital area, also Union Maintenance, District Office and Equipment Shop



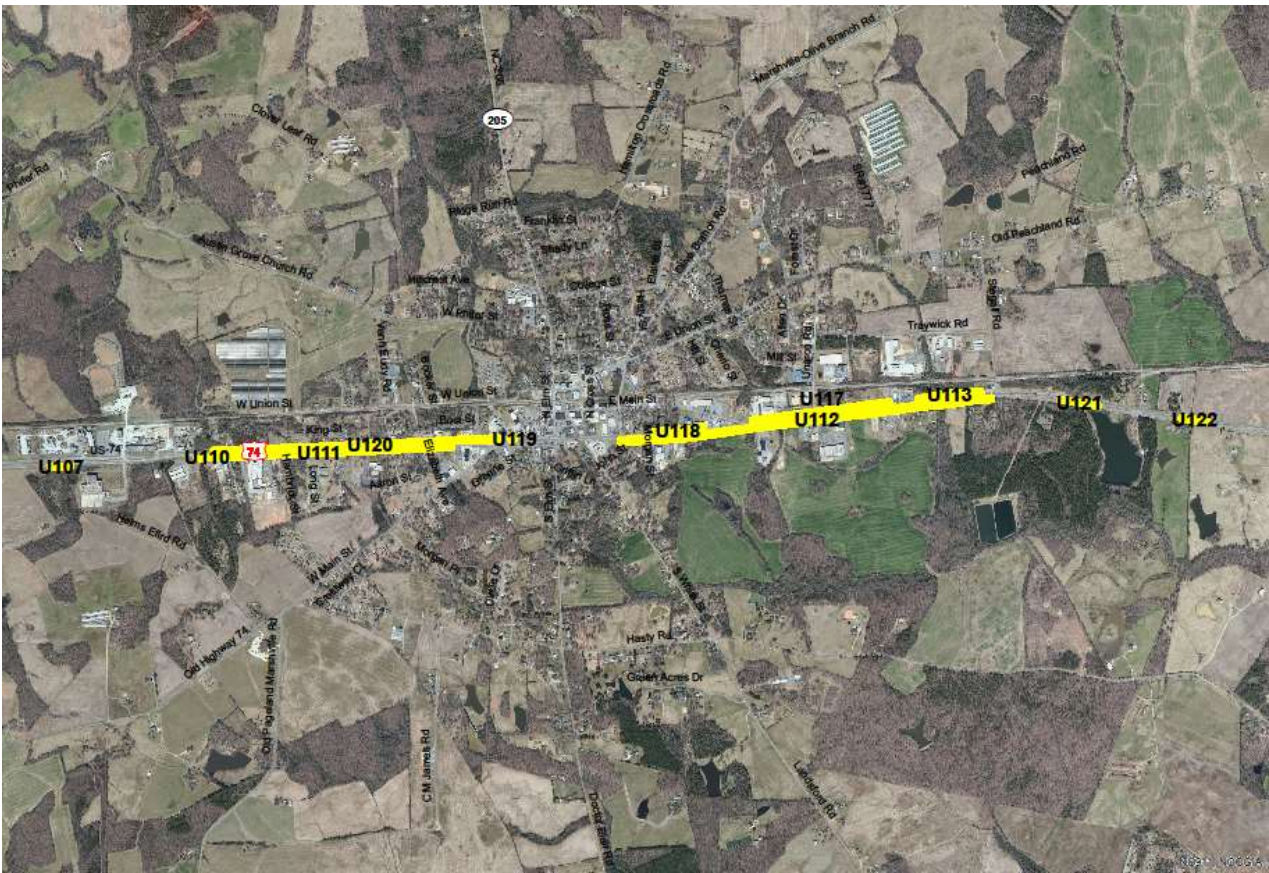
Monroe, from the Hospital/Hilltop area to East side of town



US 74 in Wingate



US 74 in Marshville



US 74 near the Anson County Line

